

1  
2  
3  
4  
5  
6 Introduced April 9, 1985 by  
7 Councilman Washington, seconded by  
8 Councilman at Large Martinez  
9 (by request)

10  
11  
12 Item Number: 85-4-808  
13  
14

15  
16 ORDINANCE NO. 1808  
17  
18

19  
20 WHEREAS, The Slidell City Council did receive a petition from  
21  
22 Ronald C. Francis requesting rezoning from C-2 Neighborhood Commercial  
23  
24 to C-4 Highway Commercial Zoning District for Lots 9 through 12 and  
25  
26 rezoning from A-8 High Density Urban to C-4 Highway Commercial Zoning  
27  
28 District for Lots 6 through 8, all in Square 11, Terrace Park Sub-  
29  
30 division. Said Square 11 is bounded Northeast by Fern Street,  
31  
32 Southeast by Terrace Ave., Southwest by Old Spanish Trail and Northwest  
33  
34 by Alva Street, and;

35  
36 WHEREAS, the Slidell Zoning Commission, in a letter dated  
37  
38 April 17, 1985, approved such zoning, and by a publication in the  
39  
40 Slidell Sentry News on April 16, 23, and 30, 1985, the Council gave  
41  
42 notice of their intention to take action on said petition by calling  
43  
44 a public hearing on May 14, 1985, in the Council Chambers,  
45

46  
47 NOW THEREFORE BE IT ORDAINED by the Slidell City Council, in  
48  
49 legal session convened, that the following described property be zoned  
50  
51 C-4 Highway Commercial Zoning District:  
52

53 PARCEL 1: All that certain lot or parcel of land, more fully  
54 described as Lots Six (6), Seven (7), and Eight (8) of Square Eleven  
55 (11), Terrace Park Subdivision, Section "B", Addition to the Town of  
56 Slidell, St. Tammany Parish, Louisiana. Said Lots 6, 7, and 8 of  
57 Square 11 adjoin each other and measure each, 25 feet front on Alva  
58 Street, same width in the rear, by a depth of 100 feet between equal  
59 and parallel lines. Said Square 11 is bounded Northeast by Fern  
60 Street, Southeast by Terrace Avenue, Southwest by the Old Spanish  
61 Trail and Northwest by Alva Street.  
62

63 PARCEL 2: All that certain lot or parcel of land, more fully  
64 described as Lots Nine (9), Ten (10), Eleven (11), and Twelve (12) of  
65 Square Eleven (11), Terrace Park Subdivision, Section "B", Addition  
66 to the Town of Slidell, St. Tammany Parish, Louisiana.  
67 Said Lot 9 measures 25 feet front on the Old Spanish Trail, 113.3 feet  
68 on the Northwest line; 117.5 feet on the Northeast line, going North-  
69 east between parallel lines. Lot 10 measures 25 feet on the Old  
70 Spanish Trail, 117.5 feet on the N.W. line; 121.7 feet on the N.E.  
71 line going Northeast between parallel lines; Lot 11 measures 25 feet  
72 on the Old Spanish Trail, 121.7 feet on the N.W. line; 125.9 feet on  
73 the N.E. line going N.E. between parallel lines; Lot 12 measures 25  
74 feet front on the Old Spanish Trail; 125.9 feet on the N.W. line;  
75 130.11 feet on the N.E. line going N.E. between parallel lines. Said  
76 Square 11 is bounded Northeast by Fern Street, Southeast by Terrace  
77 Avenue, Southwest by the Old Spanish Trail and Northwest by Alva  
78 Street.  
79

80  
81 ADOPTED this 14<sup>th</sup> day of May, 1985.  
82

Item Number: 85-4-808  
ORDINANCE NO.: 1808  
Page 2

*Alvin D. Singletary*

Alvin D. Singletary  
Councilman at Large  
President of the Council

*Salvatore A. Caruso*

Salvatore A. Caruso  
Mayor

*Barbara Manteris-Penton*  
Barbara Manteris-Penton  
Clerk of the Council

**DELIVERED**  
5/17/85 11:00 a.m.  
to the Mayor

**RECEIVED**  
5/21/85 2:00 p.m.  
from the Mayor

1  
2  
3  
4  
5  
6  
7  
8  
9  
10  
11  
12  
13  
14  
15  
16  
17  
18  
19  
20  
21  
22  
23  
24  
25  
26  
27  
28  
29  
30  
31  
32  
33  
34  
35  
36  
37  
38  
39  
40  
41  
42  
43  
44  
45  
46  
47  
48  
49  
50  
51  
52  
53  
54  
55  
56  
57  
58  
59  
60  
61  
62  
63  
64  
65  
66  
67  
68  
69  
70  
71  
72  
73  
74  
75  
76  
77  
78  
79  
80  
81  
82

1  
2  
3  
4  
5  
6 Introduced May 14, 1985 by  
7 Councilman Washington, seconded by  
8 Councilman at Large Martinez  
9

10  
11  
12 AMENDMENT  
13

14  
15  
16 An amendment amending Item No. 85-4-808.  
17


18 BE IT ORDAINED by the Slidell City Council, in legal session  
19 convened, that Item No. 85-4-808 is amended as follows:  
20

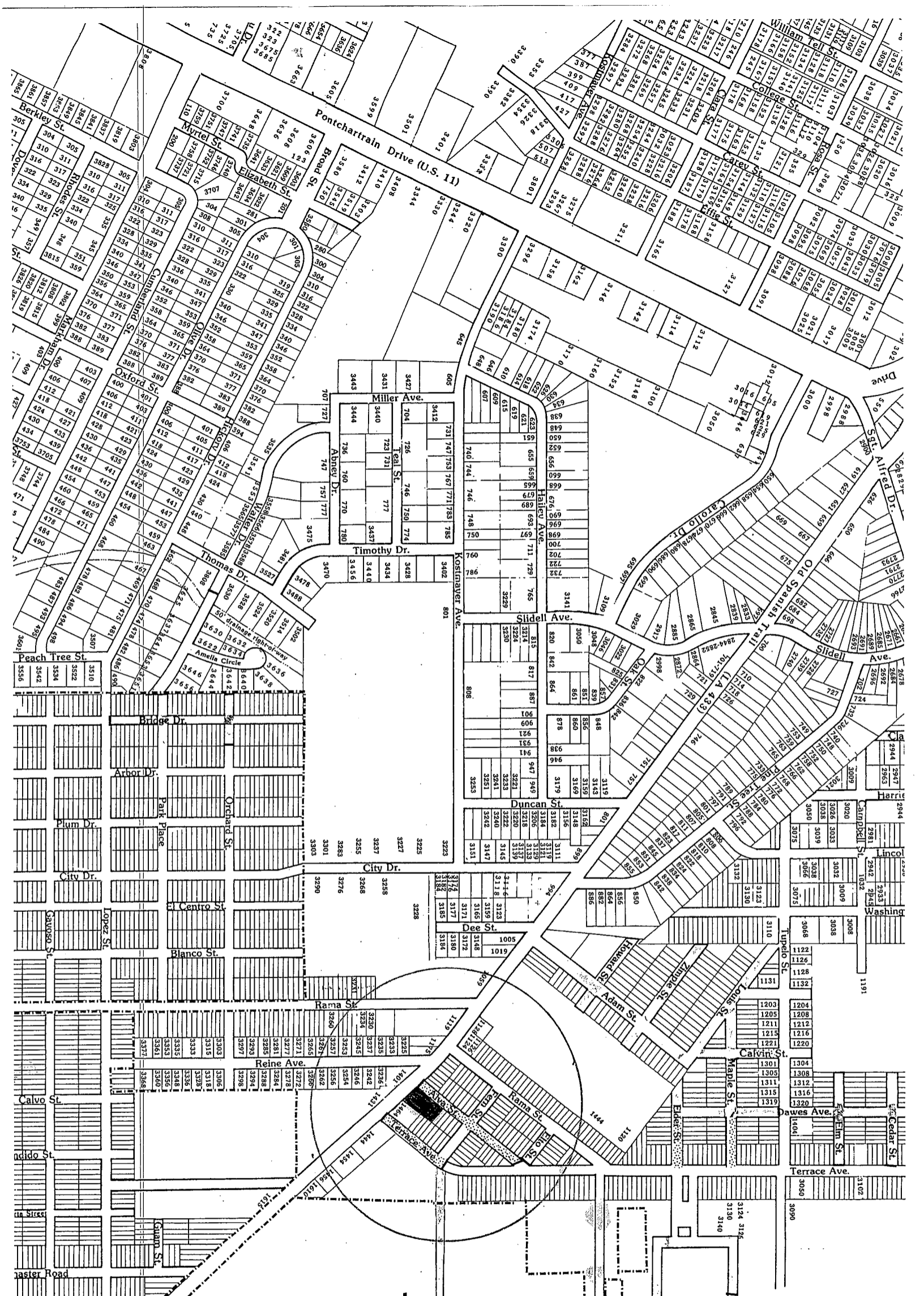
21 Page 1, Line 38: After the numbers "1985" insert the  
22 following: approved  
23  
24

25  
26  
27  
28 ADOPTED this 14th day of May, 1985.  
29

30  
31  
32   
33  
34  
35

36  
37 Alvin D. Singletary  
38 Councilman at Large  
39 President of the Council  
40

41  
42  
43  
44   
45 Barbara Manteris-Penton  
46 Clerk of the Council  
47  
48  
49  
50  
51  
52  
53  
54  
55  
56  
57  
58  
59  
60  
61  
62  
63  
64  
65  
66  
67  
68  
69  
70  
71  
72  
73  
74  
75  
76  
77  
78  
79  
80  
81  
82  
83



SEE MAP #20

285-6

April 10, 1985

PUBLIC NOTICE

Item No. 85-4-808, Request for rezoning (Ronald C. Francis) from C-2 Neighborhood Commercial to C-4 Highway Commercial Zoning District.

A Public Hearing will be held on said proposed ordinance at 6:30 P.M. on May 14, 1985 in the Council Chambers, 2055 Second Street.

This proposed ordinance is being printed by title only as required by Ordinance No. 1528.

CITY OF SLIDELL

Barbara Manteris-Penton  
Clerk of the Council

Publish: April 16, 1985  
April 23, 1985  
April 30, 1985

DATE: April 10, 1985  
TO: Sentry News  
FROM: Barbara Manteris-Penton  
Clerk of the Council

SUBJECT: PUBLICATION OF INTRODUCED ORDINANCES

Please be advised to insert the following paragraph before the printing of introduced ordinances..

Complete copies of these ordinances are available at the Council Office in City Hall, 2055 Second St.

\* Publish: April 16, 1985

\*NOTE: # 85-4-208 and # 85-6-708 have their publication dates.