

1 Introduced March 11, 2014, by Councilman
2 Cusimano, seconded by Councilwoman
3 Harbison, (by request of Administration)

4 **RESOLUTION R14-09**

5
6 A resolution by the Slidell City Council supporting the Tammany Trace
7 "Trace" to Heritage Park Bike Path Study - Option "B".

8 WHEREAS, the Bike Path Phase Zero Study has been completed; and

9
10 WHEREAS, the City of Slidell "City" is working with St. Tammany Parish
11 Government "Parish" on a plan to connect the Trace from Camp Salmen to Heritage Park;
12
13 and

14
15 WHEREAS, the Planning Commission recommends an option to bring the
16 Trace from Camp Salmen to Garden Drive to Carroll Road to West Hall to Bayou Lane to
17 Heritage Park; and

18
19 WHEREAS, the City and Parish have partnered to attain a grant to make
20 improvements to the intersection of West Hall Avenue and Carroll Road; and

21
22 WHEREAS, the City is proceeding with a road improvement project to West
23 Hall Avenue.

24
25
26 NOW THEREFORE BE IT RESOLVED by the Slidell City Council that it does
27 hereby support the Tammany Trace to Heritage Park Bike Path Study - Option "B".

28
29 **ADOPTED** this 11th day of March, 2014.

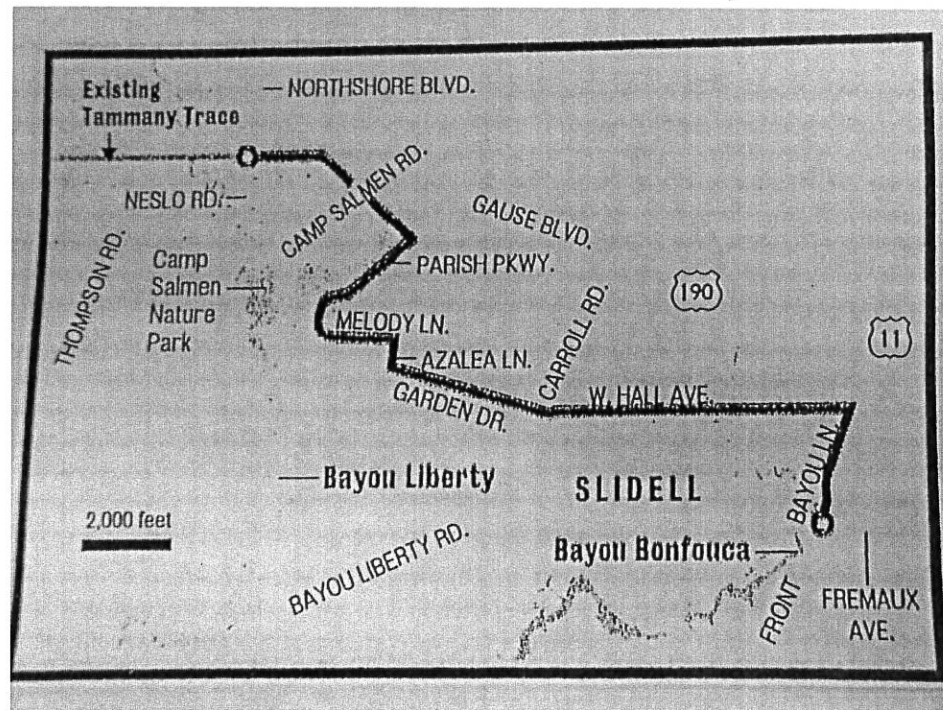
30
31
32 

33 Landon Cusimano
34 President of the Council
35 Councilman-at-Large

36 

37 Thomas P. Reeves
38 Council Administrator
39

Tammany Trace → Heritage Park Bike Path Study



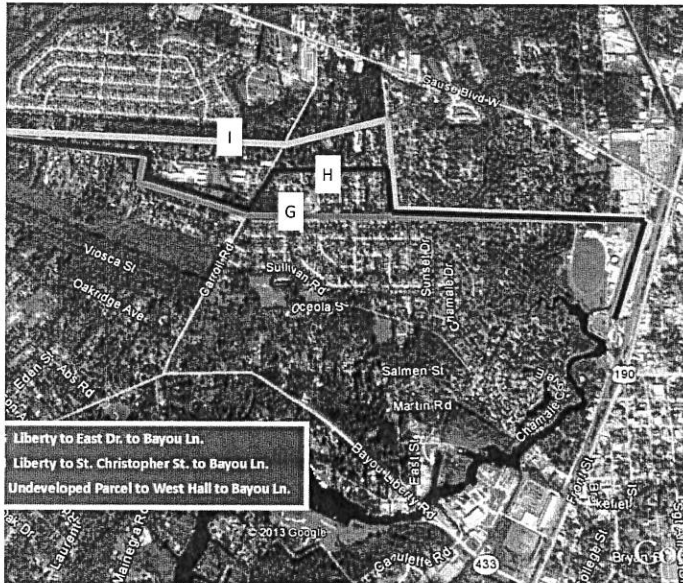
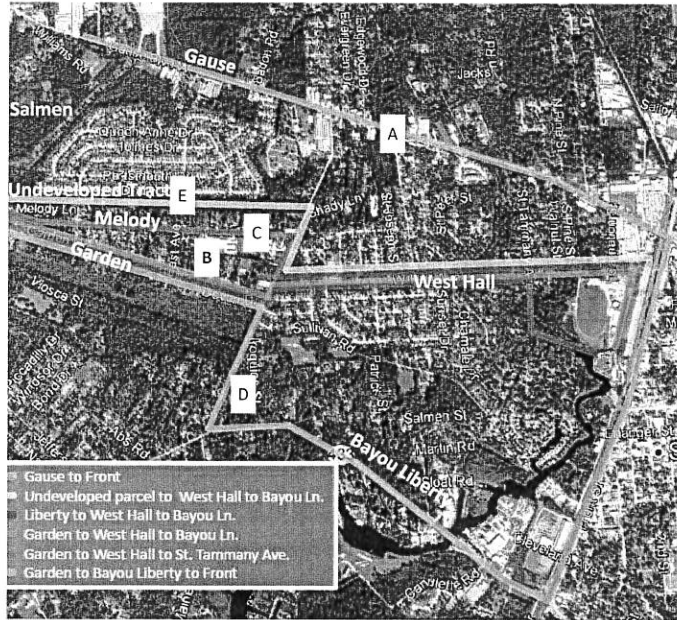
Purpose of the study is four-fold:

- A. To plan for a bicycle path that connects the Tammany Trace with Heritage Park and Olde Towne, Slidell;
- B. To establish pedestrian connectivity between Heritage Park and Olde Towne, Slidell
- C. To establish development concepts for city-owned parcels along Bayou Bonfouca and for Bayou Pattasat; and
- D. To engage the community in this planning process

Initial Review

- A. This study examined a total of nine (9) bicycle path route options for connecting the
- B. Tammany Trace from Camp Salmen to Heritage Park, three (3) pedestrian crossing options
- C. and development concepts for four (4) city-owned parcels.

Possible Routes



- A. **Path Option A** - From Camp S Gause Boulevard to Front Street to Heritage Park (Orange)
- B. **Path Option B** - From Camp S Garden Drive to Carroll Road to West Hall Avenue to Bayou Lane to Heritage Park (Blue)
- C. **Path Option C** - From Camp S Liberty Drive to Carroll Road to West Hall Avenue to Bayou Lane to Heritage Park (Purple)
- D. **Path Option D** - From Camp S Garden Drive to Carroll Road to West Hall Avenue to Bayou Lane to Heritage Park (Green)
- E. **Path Option E** – From Camp S Garden Drive to Carroll Road to West Hall Avenue to Bayou Lane to Heritage Park (Yellow)
- F. **Path Option F** – From Camp S Garden Drive to Carroll Road to West Hall Avenue to St. Tammany Avenue to the undeveloped parcel adjacent to the City-owned parcel to Heritage Park (Light Red)
- G. **Path Option G** - From Camp S Liberty Drive to East Drive to the undeveloped portion of land to West Hall Avenue to Bayou Lane to Heritage Park (Dark Blue)
- H. **Path Option H** - From Camp S Liberty Drive to East Drive to the undeveloped portion of land to Carroll Road to E. West Drive to St. Christopher Street to Maris Street to West Hall Avenue to Bayou Lane to Heritage Park (Dark Red)
- I. **Path Option I** - From Camp S Garden Drive to the undeveloped parcel to Shreveport Road to Rummel Street to Maris Street to West Hall Avenue to Bayou Lane to Heritage Park (Pink)

Table 33 – Estimated Costs per Bicycle Path Option

Path Length, ft.	Path Length, mi.	Path Width, ft.	Approx. No. of Intersection Crossings	Markings & Signage	Striping	Asphalt Paving	Total
5,274	2.89	8	75	\$45,891.30	\$33,358.42	N/A	\$79,249.72
4,067	2.66	8	28	\$17,132.76	\$30,722.33	N/A	\$47,855.09
5,354	2.91	8	29	\$17,744.64	\$33,533.14	N/A	\$51,277.77
9,733	3.74	8	40	\$24,475.36	\$43,096.67	N/A	\$67,572.03
6,010	3.03	8	22	\$13,461.45	\$34,965.84	\$240,065.00	\$288,492.65
2,451	2.36	8	20	\$12,237.68	\$27,192.96	\$55,783.00	\$95,213.62
5,712	2.96	8	36	\$23,251.69	\$34,315.01	\$36,018.05	\$142,584.65
4,652	2.77	8	35	\$21,415.94	\$31,999.97	\$80,374.66	\$133,790.57
5,729	2.96	8	29	\$17,744.64	\$34,352.14	\$260,455.50	\$312,552.27