

1 Introduced March 25, 2008, by Councilman  
2 Canada, seconded by Councilman Hursey, (by  
3 request of Administration)

4  
5 **Item No. 08-02-2712**

6 **ORDINANCE NO. 3460**

7  
8 AN ORDINANCE CREATING THE "FREMAUX ECONOMIC  
9 DEVELOPMENT DISTRICT, STATE OF LOUISIANA"; DEFINING THE  
10 BOUNDARIES THEREOF FROM WHICH AREA LOCAL AND STATE  
11 SALES TAX INCREMENTS WILL BE DETERMINED AND USED TO  
12 FINANCE AND/OR HOTEL OCCUPANCY TAX ECONOMIC  
13 DEVELOPMENT PROJECTS IN ACCORDANCE WITH AND AS  
14 AUTHORIZED BY PART II OF CHAPTER 27 OF TITLE 33 OF THE  
15 LOUISIANA REVISED STATUTES OF 1950, AS AMENDED; AND  
16 PROVIDING FOR OTHER MATTERS IN CONNECTION WITH THE  
17 FOREGOING.

18 WHEREAS, Part II, Chapter 27, Title 33 of the Louisiana Revised Statutes of 1950,  
19 as amended (La. R.S. 33:9038.31, *et seq.*) (the "Act") authorizes municipalities, parishes  
20 and certain other local governmental subdivisions to create economic development  
21 districts to carry out the purposes of the Act, which economic development districts are  
22 political subdivisions of the State of Louisiana and possess such power and authority and  
23 have such duties as provided by the Act and other law; and

24 WHEREAS, the City of Slidell, State of Louisiana (the "City"), acting through this  
25 City Council as its governing authority, desires to avail itself of the Act to create an  
26 economic development district to be called the "Fremaux Economic Development District,  
27 State of Louisiana" (the "District"), in accordance with La. R.S. 33:9038.32, from which  
28 District local and State sales tax increments are expected to be determined and used to  
29 fund the Fremaux Economic Development District Trust Fund; and

30 WHEREAS, La. R.S. 33:9038.39 further permits such economic development  
31 districts to levy sales and use taxes at a rate up to two percent (2%) and/or hotel  
32 occupancy taxes at a rate up to two percent (2%) for authorized purposes; and

33 WHEREAS, La. R.S. 33:9038.34(O) provides that this governing authority may  
34 create a special trust fund for the furtherance of economic development projects, as  
35 defined in the Act, into which the incremental increases in such sales taxes shall be  
36 deposited and loaned, granted, donated, or pledged in furtherance of economic  
37 development projects as defined in the Act; and

38 WHEREAS, in accordance with the Act, particularly La. R.S. 33:9038.32(B) and La.  
39 R.S. 33:9038.39, and a resolution adopted on February 26, 2008, the City has given notice

1 **ORDINANCE NO. 3460**  
2 **ITEM NO. 08-02-2712**  
3 **PAGE 2**

4 of its intention to create the District, and notice that it will hold a public hearing relative to  
5 the proposed creation of the District and the proposed levy of the sales and use tax and/or  
6 hotel occupancy tax therein, including a description of the boundaries of the District and  
7 containing a map showing the boundaries of the District, which notice has been published  
8 once a week for two weeks in the City's official journal, the first publication having  
9 appeared at least fourteen days before the public hearing mentioned therein; and

10 WHEREAS, on March 25, 2008, this governing authority did hold a public hearing  
11 pursuant to the aforesaid notice of intention, at which public hearing no objections were  
12 received with respect to the creation of the District or the levy of a 1.00% sales and use tax  
13 and or a 1.00% hotel occupancy tax therein.

14 **NOW THEREFORE BE IT ORDAINED** by the Slidell City Council, acting as the  
15 governing authority of the City; that:

16 SECTION 1. All of the above "Whereas" clauses are adopted as part of this  
17 ordinance.

18 SECTION 2. Creation of District. Under the authority of La. R.S. 33:9038.32 there  
19 is hereby created an economic development district within the City, to be named the  
20 "Fremaux Economic Development District, State of Louisiana," having the geographical  
21 boundaries set forth in Exhibit A attached hereto, which Exhibit A is hereby incorporated in  
22 and made a part of this Ordinance, all pursuant to the Act. As provided by the Act, the  
23 governing body of the District shall be the City Council. As provided by the Act, the District  
24 shall be a political subdivision of the State of Louisiana and shall possess such powers  
25 and authority and have such duties as provided in the Act and other law.

26 SECTION 3. Creation of Trust Fund. Under the authority of La. R.S.  
27 33:9038.34(O), there is hereby created a special trust fund, to be named the "Fremaux  
28 Economic Development District Trust Fund" (the "Trust Fund") the purpose of which will be  
29 to fund economic development projects selected by the District in the manner provided by  
30 the Act. The Trust Fund shall be established by the Director of Finance of the City and  
31 maintained as a separate fund, apart from other funds and accounts of the City or other  
32 entities, and shall be used strictly for the purposes set forth herein and in the Act.

33 SECTION 4. Authorization of Officers. The Mayor, President of the Council and  
34 Council Administrator are hereby authorized, empowered and directed to do any and all  
35 things necessary and incidental to carry out the provisions of this ordinance.

36 SECTION 5. Severability. If any provision of this ordinance shall be held to be  
37 illegal or invalid, such illegality or invalidity shall not affect any other provision of this  
38 ordinance, but this ordinance shall be construed and enforced as if such illegal or invalid  
39 provisions had not been contained herein. Any constitutional or statutory provision

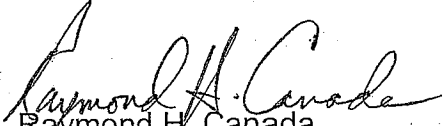
1 **ORDINANCE NO. 3460**  
2 **ITEM NO. 08-02-2712**  
3 **PAGE 3**


4 enacted after the date of this ordinance which validates or makes legal any provision of  
5 this ordinance which would not otherwise be valid or legal, shall be deemed to apply to this  
6 ordinance.

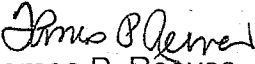
7 SECTION 6. Repealer. All ordinances or resolution, or parts thereof, in conflict  
8 herewith are hereby repealed.

9 SECTION 7. Publication; Effective Date. This ordinance shall be published one  
10 time in the official journal of the City, and shall become effective as provided by law.

11  
12 **ADOPTED** this 25th day of March, 2008.

13  
14   
15 Raymond H. Canada  
16 President of the Council  
17 Councilman, District E

18  
19   
20 Ben O. Morris  
21 Mayor

22  
23   
24 Thomas P. Reeves  
25 Council Administrator

DELIVERED	2:30 p.m.
	to the Mayor
3/27/08	
RECEIVED	from the Mayor
4/1/08	9:40 a.m.

5 EXHIBIT A

6 BOUNDARIES AND MAP OF DISTRICT

7 A certain tract or parcel of land designated as "TRACT 1A" being a  
8 portion of "TRACT 1" of the Robert Levis Development L.L.C. Properties,  
9 containing 89.159 acres or 3,883,770 square feet, located in sections 11 &  
10 14, Township 9 South, Range 14 East, of the Greensburg Land District, St.  
11 Tammany Parish, Louisiana and being more particularly described as  
12 follows:

13 Commencing at the corner common to Sections 10, 11, 14 and 15, located along  
14 the southern right-of way line of Daney St.; said point being the "POINT OF  
15 COMMENCEMENT," and labeled P.O.C.

16 Then, continuing along said right of way line, North 89 degrees 11 minutes 00  
17 seconds East a distance of 332.00 feet to a point;

18 Then, North 89 degrees 11 minutes 00 seconds East a distance of 828.00 feet to a  
19 point;

20 Then, departing said right of way line, South 00 degrees 53 minutes 56 seconds  
21 East a distance of 426.06 feet to a point;

22 Then, North 89 degrees 14 minutes 33 seconds East a distance of 275.00 feet to a  
23 point;

24 Then, North 00 degrees 53 minutes 56 seconds West a distance of 424.53 feet to a  
25 point, located along the southerly right of way line of Daney St.;

26 Then, continuing along said right of way line, along a non-tangent curve to the right  
27 having a delta of 16 degrees 17 minutes 43 seconds, a radius of 300.00 feet, an arc length  
28 of 85.32 feet, a chord bearing of South 76 degrees 21 minutes 57 seconds East and a  
29 chord distance of 85.03 feet to a point;

30 Then, South 68 degrees 13 minutes 05 seconds East a distance of 38.57 feet to a  
31 point;

32 Then, along a curve to the left having a delta of 30 degrees 56 minutes 24 seconds,  
33 a radius of 375.00 feet, an arc length of 202.50 feet, a chord bearing of South 83 degrees  
34 41 minutes 17 seconds East and a chord distance of 200.05 feet to a point;

35 Then, North 80 degrees 50 minutes 31 seconds East a distance of 167.84 feet to a  
36 point;

37 Then, along a curve to the right having a delta of 08 degrees 20 minutes 29  
38 seconds, a radius of 1,180.00 feet, an arc length of 171.79 feet, a chord bearing of North  
39 85 degrees 00 minutes 45 seconds East and a chord distance of 171.64 feet to a point;

Then, North 89 degrees 11 minutes 00 seconds East a distance of 457.12 feet to a  
point;

Then, departing said right of way line, South 00 degrees 54 minutes 24 seconds  
East a distance of 305.86 feet to a point;

1 **ORDINANCE NO. 3460**

2 **ITEM NO. 08-02-2712**

3 **PAGE 5**

4 Then, North 88 degrees 52 minutes 00 seconds East a distance of 96.48 feet to a  
5 point;  
6 Then, North 89 degrees 12 minutes 00 seconds East a distance of 659.91 feet to a  
7 point;  
8 Then, North 00 degrees 49 minutes 38 seconds West a distance of 330.00 feet to a  
9 point;  
10 Then, South 89 degrees 48 minutes 29 seconds East a distance of 87.29 feet to a  
11 point;  
12 Then, North 30 degrees 15 minutes 15 seconds East a distance of 121.88 feet to a  
13 point;  
14 Then, North 12 degrees 42 minutes 53 seconds East a distance of 121.63 feet to a  
15 point;  
16 Then, North 02 degrees 51 minutes 46 seconds West a distance of 32.86 feet to a  
17 point;  
18 Then, North 13 degrees 49 minutes 48 seconds West a distance of 90.97 feet to a  
19 point;  
20 Then, North 89 degrees 09 minutes 03 seconds East a distance of 15.43 feet to a  
21 point;  
22 Then, North 12 degrees 18 minutes 35 seconds West a distance of 2.41 feet to a  
23 point;  
24 Then, North 03 degrees 53 minutes 55 seconds West a distance of 173.82 feet to a  
25 point;  
26 Then, North 14 degrees 24 minutes 36 seconds East a distance of 160.77 feet to a  
27 point, located along the southerly right of way line of US Highway No. 190 (also known as  
28 Fremaux Road/ Short Cut Road);  
29 Then, continuing along said right of way, South 65 degrees 44 minutes 07 seconds  
30 East a distance of 205.13 feet to a point;  
31 Then, South 65 degrees 49 minutes 03 seconds East a distance of 94.22 feet to a  
32 point; said being the "POINT OF BEGINNING" and labeled "P.O.B.4,"  
33 Then, continuing along said right of way, South 65 degrees 49 minutes 03 seconds  
34 East a distance of 188.76 feet to a point;  
35 Then, departing said right of way, South 22 degrees 11 minutes 41 seconds East a  
36 distance of 22.23 feet to a point;  
37 Then, South 20 degrees 57 minutes 02 seconds West a distance of 128.81 feet to a  
38 point;  
39 Then, South 60 degrees 44 minutes 07 seconds East a distance of 286.86 feet to a  
point;  
Then, South 60 degrees 43 minutes 57 seconds East a distance of 278.21 feet to a  
point;  
Then, South 30 degrees 57 minutes 31 seconds East a distance of 283.50 feet to a  
point;

1 **ORDINANCE NO. 3460**  
2 **ITEM NO. 08-02-2712**  
3 **PAGE 6**

4 Then, South 06 degrees 28 minutes 36 seconds West a distance of 74.73 feet to a  
5 point;  
6 Then, South 73 degrees 10 minutes 08 seconds East a distance of 22.71 feet to a  
7 point;  
8 Then, North 84 degrees 21 minutes 35 seconds East a distance of 108.06 feet to a  
9 point;  
10 Then, South 05 degrees 06 minutes 41 seconds East a distance of 274.30 feet to a  
11 point;  
12 Then, South 40 degrees 18 minutes 15 seconds West a distance of 360.63 feet to a  
13 point;  
14 Then, South 17 degrees 10 minutes 07 seconds West a distance of 400.00 feet to a  
15 point, located on the westerly right of way line of Interstate Highway no. 10;  
16 Then, continuing along said right of way, South 17 degrees 10 minutes 07 seconds  
17 West a distance of 1008.64 feet to a point;  
18 Then, departing said right of way, North 73 degrees 56 minutes 09 seconds West a  
19 distance of 204.68 feet to a point;  
20 Then, South 54 degrees 24 minutes 20 seconds West a distance of 128.51 feet to a  
21 point;  
22 Then, North 40 degrees 58 minutes 45 seconds West a distance of 233.70 feet to a  
23 point;  
24 Then, North 85 degrees 14 minutes 26 seconds West a distance of 75.34 feet to a  
25 point;  
26 Then, North 00 degrees 49 minutes 44 seconds West a distance of 11.91 feet to a  
27 point;  
28 Then, South 89 degrees 02 minutes 58 seconds West a distance of 100.00 feet to a  
29 point;  
30 Then, South 00 degrees 49 minutes 44 seconds East a distance of 1.91 feet to a  
31 point;  
32 Then, North 85 degrees 14 minutes 26 seconds West a distance of 456.60 feet to a  
33 point;  
34 Then, North 04 degrees 45 minutes 34 seconds East a distance of 571.77 feet to a  
35 point;  
36 Then, North 85 degrees 14 minutes 06 seconds West a distance of 328.54 feet to a  
37 point;  
38 Then, South 84 degrees 06 minutes 07 seconds West a distance of 42.24 feet to a  
39 point;  
40 Then, South 79 degrees 20 minutes 24 seconds West a distance of 93.43 feet to a  
41 point;

1 **ORDINANCE NO. 3460**  
2 **ITEM NO. 08-02-2712**  
3 **PAGE 7**

4 Then, along a non-tangent curve to the left having a delta of 74 degrees 25 minutes  
5 21 seconds, a radius of 84.00 feet, an arc length of 109.11 feet, a chord bearing of North  
6 10 degrees 30 minutes 42 seconds West and a chord distance of 101.60 feet to a point;

7 Then, along a curve to the right having a delta of 44 degrees 08 minutes 05  
8 seconds, a radius of 20.00 feet, an arc length of 15.41 feet, a chord bearing of North 25  
9 degrees 39 minutes 20 seconds West and a chord distance of 15.03 feet to a point;

10 Then, along a curve to the left having a delta of 11 degrees 12 minutes 34 seconds,  
11 a radius of 550.00 feet, an arc length of 107.60 feet, a chord bearing of North 09 degrees  
12 11 minutes 34 seconds West and a chord distance of 107.43 feet to a point;

13 Then, North 14 degrees 47 minutes 52 seconds West a distance of 401.79 feet to a  
14 point;

15 Then, along a curve to the right having a delta of 31 degrees 56 minutes 40  
16 seconds, a radius of 424.60 feet, an arc length of 236.73 feet, a chord bearing of North 01  
17 degrees 10 minutes 29 seconds East and a chord distance of 233.68 feet to a point;

18 Then, North 17 degrees 08 minutes 49 seconds East a distance of 51.60 feet to a  
19 point;

20 Then, along a curve to the right having a delta of 50 degrees 00 minutes 59  
21 seconds, a radius of 190.00 feet, an arc length of 165.86 feet, a chord bearing of North 42  
22 degrees 09 minutes 19 seconds East and a chord distance of 160.64 feet to a point;

23 Then, North 67 degrees 09 minutes 48 seconds East a distance of 626.21 feet to a  
24 point;

25 Then, along a curve to the left having a delta of 11 degrees 51 minutes 53 seconds,  
26 a radius of 397.07 feet, an arc length of 82.22 feet, a chord bearing of North 61 degrees 13  
27 minutes 52 seconds East and a chord distance of 82.08 feet to a point;

28 Then, North 55 degrees 17 minutes 55 seconds East a distance of 280.87 feet to a  
29 point;

30 Then, along a curve to the right having a delta of 36 degrees 16 minutes 37  
31 seconds, a radius of 20.00 feet, an arc length of 12.66 feet, a chord bearing of North 73  
32 degrees 26 minutes 13 seconds East and a chord distance of 12.45 feet to a point;

33 Then, South 88 degrees 25 minutes 28 seconds East a distance of 57.46 feet to a  
34 point;

35 Then, along a curve to the left having a delta of 160 degrees 05 minutes 58  
36 seconds, a radius of 109.00 feet, an arc length of 304.57 feet, a chord bearing of North 11  
37 degrees 31 minutes 33 seconds East and a chord distance of 214.72 feet to a point;

38 Then, along a curve to the right having a delta of 50 degrees 31 minutes 52  
39 seconds, a radius of 20.00 feet, an arc length of 17.64 feet, a chord bearing of North 43  
degrees 15 minutes 30 seconds West and a chord distance of 17.07 feet to a point;

Then, North 17 degrees 59 minutes 34 seconds West a distance of 102.86 feet to a  
point;

Then, along a curve to the right having a delta of 42 degrees 18 minutes 51  
seconds, a radius of 269.00 feet, an arc length of 198.66 feet, a chord bearing of North 03  
degrees 09 minutes 52 seconds East and a chord distance of 194.18 feet to a point;

1 **ORDINANCE NO. 3460**  
2 **ITEM NO. 08-02-2712**  
3 **PAGE 8**

4 Then, North 24 degrees 19 minutes 17 seconds East a distance of 437.09 feet to a  
5 point; to the POINT OF BEGINNING.

6  
7 A certain tract or parcel of land being a portion of "TRACT 2C" of the  
8 Robert Levis Development L.L.C. Properties, containing 2.399 acres or  
9 104,520 square feet, located in sections 11 & 14, Township 9 South, Range  
10 14 East, of the Greensburg Land District, St. Tammany Parish, Louisiana  
and being more particularly described as follows:

11 Commencing at the corner common to Sections 10, 11, 14 and 15, located along  
12 the southern right-of way line of Daney St.; said point being the "POINT OF  
13 COMMENCEMENT," and labeled P.O.C.

14 Then, continuing along said right of way line, North 89 degrees 11 minutes 00  
15 seconds East a distance of 1,160.00 feet to a point;

16 Then, departing said right of way, South 00 degrees 53 minutes 56 seconds East a  
17 distance of 426.06 feet to a point;

18 Then, North 89 degrees 14 minutes 33 seconds East a distance of 275.00 feet to a  
19 point;

20 Then, North 00 degrees 53 minutes 56 seconds West a distance of 424.53 feet to a  
21 point, located along the southerly right of way of Daney St.;

22 Then, continuing along said right of way, Then, along a non-tangent curve to the  
23 right having a delta of 16 degrees 17 minutes 43 seconds, a radius of 300.00 feet, an arc  
length of 85.32 feet, a chord bearing of South 76 degrees 21 minutes 57 seconds East and  
a chord distance of 85.03 feet to a point;

24 Then, South 68 degrees 13 minutes 05 seconds East a distance of 38.57 feet to a  
25 point;

26 Then, along a curve to the left having a delta of 30 degrees 56 minutes 24 seconds,  
27 a radius of 375.00 feet, an arc length of 202.50 feet, a chord bearing of South 83 degrees  
41 minutes 17 seconds East and a chord distance of 200.05 feet to a point;

28 Then, North 80 degrees 50 minutes 31 seconds East a distance of 167.84 feet to a  
29 point;

30 Then, along a curve to the right having a delta of 08 degrees 20 minutes 29  
31 seconds, a radius of 1,180.00 feet, an arc length of 171.79 feet, a chord bearing of North  
85 degrees 00 minutes 45 seconds East and a chord distance of 171.64 feet to a point;

32 Then, North 89 degrees 11 minutes 00 seconds East a distance of 457.12 feet to a  
33 point;

34 Then, departing said right of way, South 00 degrees 54 minutes 24 seconds East a  
35 distance of 305.86 feet to a point;

36 Then, North 88 degrees 52 minutes 00 seconds East a distance of 96.48 feet to a  
37 point;

38 Then, North 89 degrees 12 minutes 00 seconds East a distance of 659.91 feet to a  
39 point; said being the "POINT OF BEGINNING" and labeled "P.O.B.3,"



1 **ORDINANCE NO. 3460**

2 **ITEM NO. 08-02-2712**

3 **PAGE 9**

4 Then, North 00 degrees 49 minutes 38 seconds West a distance of 330.00 feet to a  
5 point;

6 Then, South 89 degrees 48 minutes 29 seconds East a distance of 87.29 feet to a  
7 point;

8 Then, North 30 degrees 15 minutes 15 seconds East a distance of 121.88 feet to a  
9 point;

10 Then, North 12 degrees 42 minutes 53 seconds East a distance of 121.63 feet to a  
11 point;

12 Then, North 02 degrees 51 minutes 46 seconds West a distance of 32.86 feet to a  
13 point;

14 Then, North 13 degrees 49 minutes 48 seconds West a distance of 90.97 feet to a  
15 point;

16 Then, North 89 degrees 09 minutes 03 seconds East a distance of 15.43 feet to a  
17 point;

18 Then, North 12 degrees 18 minutes 35 seconds West a distance of 2.41 feet to a  
19 point;

20 Then, North 03 degrees 53 minutes 55 seconds West a distance of 173.82 feet to a  
21 point;

22 Then, North 14 degrees 24 minutes 36 seconds East a distance of 160.77 feet to a  
23 point, located along the southerly right of way line of US Highway No. 190 (also known as  
24 Fremaux Road/ Short Cut Road);

25 Then, continuing along said right of way, South 65 degrees 44 minutes 07 seconds  
26 East a distance of 187.34 feet to a point;

27 Then, departing said right of way, South 24 degrees 19 minutes 17 seconds West a  
28 distance of 436.83 feet to a point;

29 Then, along a curve to the left having a delta of 38 degrees 05 minutes 10 seconds,  
30 a radius of 381.00 feet, an arc length of 253.26 feet, a chord bearing of South 05 degrees  
31 16 minutes 43 seconds West and a chord distance of 248.63 feet to a point;

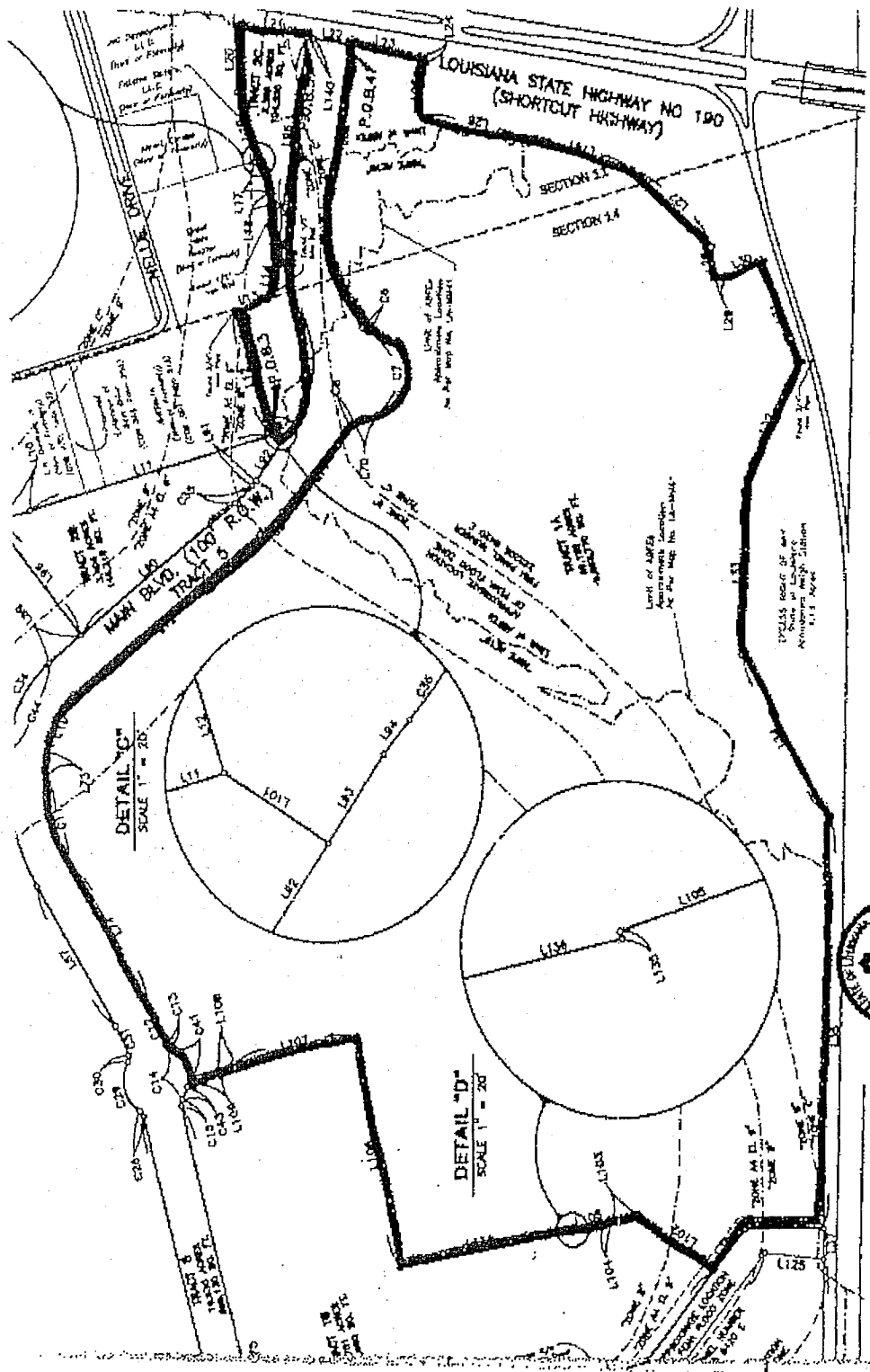
32 Then, along a curve to the right having a delta of 69 degrees 03 minutes 48  
33 seconds, a radius of 269.00 feet, an arc length of 324.25 feet, a chord bearing of South 20  
34 degrees 46 minutes 01 seconds West and a chord distance of 304.97 feet to a point;

35 Then, South 55 degrees 17 minutes 55 seconds West a distance of 10.79 feet to a  
36 point;

37 Then, South 50 degrees 32 minutes 06 seconds West a distance of 26.39 feet to a  
38 point;

39 Then, North 41 degrees 03 minutes 04 seconds West a distance of 32.13 feet to a  
point; to the POINT OF BEGINNING.

1 ORDINANCE NO. 3460  
2 ITEM NO. 08-02-2712  
3 PAGE 10  
4  
5  
6  
7  
8  
9  
10  
11  
12  
13  
14  
15  
16  
17  
18  
19  
20  
21  
22  
23  
24  
25  
26  
27  
28  
29  
30  
31  
32  
33  
34  
35  
36  
37  
38  
39



# ACADIA

LAND SURVEYING, L.L.C.

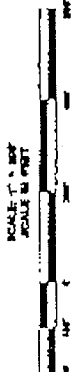
Phone (504) 444-0088  
Fax (504) 444-0095  
E-mail: ACADIA@ACADIA.LLC

**CERTIFICATION:**  
I, the undersigned, being a duly licensed Professional Engineer in the State of Louisiana, hereby certify that I am the author of the above described map and that I am a duly licensed Professional Engineer in the State of Louisiana. I am duly sworn to the truth and accuracy of the data and information furnished to me and that I am a duly licensed Professional Engineer in the State of Louisiana. I am duly sworn to the truth and accuracy of the data and information furnished to me and that I am a duly licensed Professional Engineer in the State of Louisiana.

SHEET 1 OF 2



LEGEND	
OWNER PROPERTY CORNER AS SHOWN	0
1/2" 1/2" = 1' 0"	1
ROUND CORNER	2



1 **ORDINANCE NO. 3460**  
2 **ITEM NO. 08-02-2712**  
3 **PAGE 11**

4 STATE OF LOUISIANA

5  
6 PARISH OF ST. TAMMANY

7 I, the undersigned Council Administrator of the Slidell City Council do hereby certify  
8  
9 that the foregoing ten (10) pages constitute a true and correct copy of the proceedings  
10  
11 taken by said Council on March 25, 2008, creating the "Fremaux Economic Development  
12  
13 District, State of Louisiana," defining the boundaries thereof from which area local and  
14  
15 state sales tax increments will be determined and used to finance economic development  
16  
17 projects in accordance with and as authority by Part II of Chapter 27 of Title 33 of the  
18  
19 Louisiana Revised Statues of 1950, as amended; and providing for other matters in  
20  
21 connection with the foregoing.

22 IN FAITH WHEREOF, witness my official signature and the impress of the official  
23  
24 seal of said City on this, the 25th day of March, 2008.

25  
26 (SEAL)  
27  
28  
29  
30  
31  
32  
33  
34  
35  
36  
37  
38  
39



---

Thomas P. Reeves  
Council Administrator