

1 Amended by Ord. 3678 4/9/13

Introduced March 25, 2008, by Councilman  
Canada, seconded by Councilman Hursey, (by  
request of Administration)

4 **Item No. 08-02-2710**

6 **ORDINANCE NO. 3459**

7 AN ORDINANCE CREATING THE "FREMAUX COMMUNITY  
8 DEVELOPMENT DISTRICT, STATE OF LOUISIANA" AS AUTHORIZED BY  
9 CHAPTER 27-B OF TITLE 33 OF THE LOUISIANA REVISED STATUTES  
10 OF 1950, AS AMENDED; AND PROVIDING FOR OTHER MATTERS IN  
11 CONNECTION WITH THE FOREGOING.

12 WHEREAS, Chapter 27-B of Title 33 of the Louisiana Revised Statutes of 1950, as  
13 amended (La. R.S. 33:9039.11, *et seq.*) (the "Act") allows the governing authority of  
14 municipalities to create community development districts to carry out the purposes of the  
15 Act, which community development districts possess such powers and authority and have  
16 such duties as provided by the Act and other law; and

17 WHEREAS, in accordance with the Act, (a) Robert Levis Development Company,  
18 LLC and Levis Partners, LLC, have filed a petition for the creation of a community  
19 development district to be called the "Fremaux Community Development District, State of  
20 Louisiana" (the "District"), which petition is attached to this ordinance as Exhibit A; (b) the  
21 City of Slidell, State of Louisiana (the "City"), acting through this City Council as its  
22 governing authority has given notice of its intention to hold a public hearing, (c) an  
23 appropriate notice of public hearing was published in four (4) successive weekly issues of  
24 the City's official journal on March 2, March 9, March 16 and March 23, 2008, and (d) a  
25 public hearing on the creation of the District was held on March 25, 2008, at which public  
hearing no objections were received with respect to the creation of the District; and

26 WHEREAS, in accordance with the Act, this City Council has considered the record  
27 of the public hearing and any other relevant factors in making its determination to grant the  
28 petition for the establishment of the District and now desires to avail itself of the Act to  
29 create the District in accordance with La. R.S. 33:9039.14.

30 NOW THEREFORE BE IT ORDAINED by the Slidell City Council, acting as the  
31 governing authority of the City; that:

32 SECTION 1. Creation of District. Under the authority of La. R.S. 33:9039.14 there  
33 is hereby created a community development district within the City, to be named the  
34 "Fremaux Community Development District, State of Louisiana," having the geographical  
35 boundaries set forth in the Petition incorporated herein.

36  
37  
38  
39

1 **ORDINANCE NO. 3459**  
2 **ITEM NO. 08-02-2710**  
3 **PAGE 2**

4 SECTION 2. Boundaries of District: The boundaries of the District are as set forth in  
5 Exhibit B attached hereto, which Exhibit B is hereby incorporated in and made a part of  
6 this Ordinance.

7 SECTION 3. Members of Board of Supervisors. The following persons are  
8 designated as the initial members of the board of supervisors of the District, and shall  
9 serve in that office until replaced by elected members as provided in R.S.  
10 33:9039.15(B)(1):

<u>Name</u>	<u>Mailing Address</u>
Robert Levis*	Robert Levis Levis Chevrolet/Cadillac P. O. Box 1529 Slidell, LA 70459
Stan Middleton, III	Commercial Holding Corporation 14 Rue Royale Metairie, Louisiana 70002
Seth Levine	201 St. Charles Ave., Suite 3600 New Orleans, Louisiana 70170
Rusty Palmer	Corporate Realty 201 St. Charles Ave., Suite 4411 New Orleans, Louisiana 70170
Michael J. Siegel	459 Audubon St. New Orleans, Louisiana 70118

28  
29 \*As required by R.S. 33:9039.15(A), Mr. Levis is a resident of the area immediately  
30 adjacent to the district.

31 SECTION 4. Authorization of Officers. The Mayor, President of the Council and  
32 Council Administrator are hereby authorized, empowered and directed to do any and all  
33 things necessary and incidental to carry out the provisions of this resolution.

34 SECTION 5. Severability. If any provision of this ordinance shall be held to be  
35 illegal or invalid, such illegality or invalidity shall not affect any other provision of this  
36 ordinance, but this ordinance shall be construed and enforced as if such illegal or invalid  
37 provisions had not been contained herein. Any constitutional or statutory provision  
38 enacted after the date of this ordinance which validates or makes legal any provision of  
39

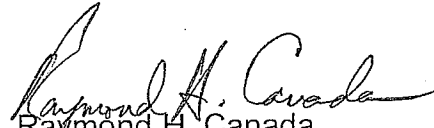
1 **ORDINANCE NO. 3459**  
2 **ITEM NO. 08-02-2710**  
3 **PAGE 3**

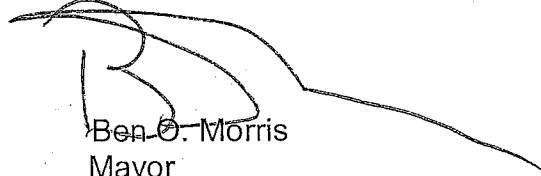
4 this ordinance which would not otherwise be valid or legal, shall be deemed to apply to this  
5 ordinance.

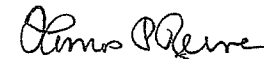
6 SECTION 6. Repealer. All ordinances or resolution, or parts thereof, in conflict  
7 herewith are hereby repealed.

8  
9 SECTION 7. Publication; Effective Date. This ordinance shall be published one  
10 time in the official journal of the City, and shall become effective as provided by law.

11 **ADOPTED** this 25th day of March, 2008.

12  
13   
14 Raymond H. Canada  
15 President of the Council  
16 Councilman, District E

17  
18   
19 Ben O. Morris  
20 Mayor

21   
22 Thomas P. Reeves  
23 Council Administrator

DELIVERED	2:30 pm
	to the Mayor
3/27/08	
RECEIVED	from the Mayor
4/1/08	9:40 a.m.

5 PETITION TO CREATE THE  
6 FREMAUX COMMUNITY DEVELOPMENT DISTRICT  
7 PURSUANT TO LA. R.S. 33:9039.14

8 This petition of Robert Levis Development Company, LLC and Levis Partners, LLC,  
9 which is being delivered to the Slidell City Council, the governing authority of the City of  
10 Slidell, State of Louisiana, pursuant to La. R.S. 33:9039.14, respectfully requests that said  
11 City Council proceed with the creation of a community development district pursuant to  
12 Chapter 27-B of Title 33 of the Louisiana Revised Statutes of 1950, as amended (the  
13 "CDD Act"). The undersigned petitioner is the sole owner of all of the property in the  
14 proposed district. In accordance with the CDD Act, the following information is provided:

15 1. Boundaries of District: The boundaries of the proposed district are as follows:

16 A certain tract or parcel of land designated as "TRACT 1A" being a  
17 portion of "TRACT 1" of the Robert Levis Development L.L.C. Properties,  
18 containing 89.159 acres or 3,883,770 square feet, located in sections 11 &  
19 14, Township 9 South, Range 14 East, of the Greensburg Land District, St.  
20 Tammany Parish, Louisiana and being more particularly described as  
21 follows:

22 Commencing at the corner common to Sections 10, 11, 14 and 15, located along  
23 the southern right-of way line of Daney St.; said point being the "POINT OF  
24 COMMENCEMENT," and labeled P.O.C.

25 Then, continuing along said right of way line, North 89 degrees 11 minutes 00  
26 seconds East a distance of 332.00 feet to a point;

27 Then, North 89 degrees 11 minutes 00 seconds East a distance of 828.00 feet to a  
28 point;

29 Then, departing said right of way line, South 00 degrees 53 minutes 56 seconds  
30 East a distance of 426.06 feet to a point;

31 Then, North 89 degrees 14 minutes 33 seconds East a distance of 275.00 feet to a  
32 point;

33 Then, North 00 degrees 53 minutes 56 seconds West a distance of 424.53 feet to a  
34 point, located along the southerly right of way line of Daney St.;

35 Then, continuing along said right of way line, along a non-tangent curve to the right  
36 having a delta of 16 degrees 17 minutes 43 seconds, a radius of 300.00 feet, an arc length  
37 of 85.32 feet, a chord bearing of South 76 degrees 21 minutes 57 seconds East and a  
38 chord distance of 85.03 feet to a point;

39 Then, South 68 degrees 13 minutes 05 seconds East a distance of 38.57 feet to a  
point;

1 **ORDINANCE NO. 3459**  
2 **ITEM NO. 08-02-2710**  
3 **PAGE 5**

4 Then, along a curve to the left having a delta of 30 degrees 56 minutes 24 seconds,  
5 a radius of 375.00 feet, an arc length of 202.50 feet, a chord bearing of South 83 degrees  
6 41 minutes 17 seconds East and a chord distance of 200.05 feet to a point;

7 Then, North 80 degrees 50 minutes 31 seconds East a distance of 167.84 feet to a  
8 point;

9 Then, along a curve to the right having a delta of 08 degrees 20 minutes 29  
10 seconds, a radius of 1,180.00 feet, an arc length of 171.79 feet, a chord bearing of North  
11 85 degrees 00 minutes 45 seconds East and a chord distance of 171.64 feet to a point;

12 Then, North 89 degrees 11 minutes 00 seconds East a distance of 457.12 feet to a  
13 point;

14 Then, departing said right of way line, South 00 degrees 54 minutes 24 seconds  
15 East a distance of 305.86 feet to a point;

16 Then, North 88 degrees 52 minutes 00 seconds East a distance of 96.48 feet to a  
17 point;

18 Then, North 89 degrees 12 minutes 00 seconds East a distance of 659.91 feet to a  
19 point;

20 Then, North 00 degrees 49 minutes 38 seconds West a distance of 330.00 feet to a  
21 point;

22 Then, South 89 degrees 48 minutes 29 seconds East a distance of 87.29 feet to a  
23 point;

24 Then, North 30 degrees 15 minutes 15 seconds East a distance of 121.88 feet to a  
25 point;

26 Then, North 12 degrees 42 minutes 53 seconds East a distance of 121.63 feet to a  
27 point;

28 Then, North 02 degrees 51 minutes 46 seconds West a distance of 32.86 feet to a  
29 point;

30 Then, North 13 degrees 49 minutes 48 seconds West a distance of 90.97 feet to a  
31 point;

32 Then, North 89 degrees 09 minutes 03 seconds East a distance of 15.43 feet to a  
33 point;

34 Then, North 12 degrees 18 minutes 35 seconds West a distance of 2.41 feet to a  
35 point;

36 Then, North 03 degrees 53 minutes 55 seconds West a distance of 173.82 feet to a  
37 point;

38 Then, North 14 degrees 24 minutes 36 seconds East a distance of 160.77 feet to a  
39 point, located along the southerly right of way line of US Highway No. 190 (also known as  
40 Fremaux Road/ Short Cut Road);

41 Then, continuing along said right of way, South 65 degrees 44 minutes 07 seconds  
42 East a distance of 205.13 feet to a point;

43 Then, South 65 degrees 49 minutes 03 seconds East a distance of 94.22 feet to a  
44 point; said being the "POINT OF BEGINNING" and labeled "P.O.B.4,"

1 **ORDINANCE NO. 3459**  
2 **ITEM NO. 08-02-2710**  
3 **PAGE 6**

4 Then, continuing along said right of way, South 65 degrees 49 minutes 03 seconds  
5 East a distance of 188.76 feet to a point;

6 Then, departing said right of way, South 22 degrees 11 minutes 41 seconds East a  
7 distance of 22.23 feet to a point;

8 Then, South 20 degrees 57 minutes 02 seconds West a distance of 128.81 feet to a  
9 point;

10 Then, South 60 degrees 44 minutes 07 seconds East a distance of 286.86 feet to a  
11 point;

12 Then, South 60 degrees 43 minutes 57 seconds East a distance of 278.21 feet to a  
13 point;

14 Then, South 30 degrees 57 minutes 31 seconds East a distance of 283.50 feet to a  
15 point;

16 Then, South 06 degrees 28 minutes 36 seconds West a distance of 74.73 feet to a  
17 point;

18 Then, South 73 degrees 10 minutes 08 seconds East a distance of 22.71 feet to a  
19 point;

20 Then, North 84 degrees 21 minutes 35 seconds East a distance of 108.06 feet to a  
21 point;

22 Then, South 05 degrees 06 minutes 41 seconds East a distance of 274.30 feet to a  
23 point;

24 Then, South 40 degrees 18 minutes 15 seconds West a distance of 360.63 feet to a  
25 point;

26 Then, South 17 degrees 10 minutes 07 seconds West a distance of 400.00 feet to a  
27 point;

28 Then, South 13 degrees 15 minutes 56 seconds East a distance of 463.92 feet to a  
29 point, located on the westerly right of way line of Interstate Highway no. 10;

30 Then, continuing along said right of way, South 17 degrees 10 minutes 07 seconds  
31 West a distance of 1008.64 feet to a point;

32 Then, departing said right of way , North 73 degrees 56 minutes 09 seconds West a  
33 distance of 204.68 feet to a point;

34 Then, South 54 degrees 24 minutes 20 seconds West a distance of 128.51 feet to a  
35 point;

36 Then, North 40 degrees 58 minutes 45 seconds West a distance of 233.70 feet to a  
37 point;

38 Then, North 85 degrees 14 minutes 26 seconds West a distance of 75.34 feet to a  
39 point;

Then, North 00 degrees 49 minutes 44 seconds West a distance of 11.91 feet to a  
point;

Then, South 89 degrees 02 minutes 58 seconds West a distance of 100.00 feet to a  
point;

Then, South 00 degrees 49 minutes 44 seconds East a distance of 1.91 feet to a  
point;

1 **ORDINANCE NO. 3459**  
2 **ITEM NO. 08-02-2710**  
3 **PAGE 7**

4 Then, North 85 degrees 14 minutes 26 seconds West a distance of 456.60 feet to a  
5 point;

6 Then, North 04 degrees 45 minutes 34 seconds East a distance of 571.77 feet to a  
7 point;

8 Then, North 85 degrees 14 minutes 06 seconds West a distance of 328.54 feet to a  
9 point;

10 Then, South 84 degrees 06 minutes 07 seconds West a distance of 42.24 feet to a  
11 point;

12 Then, South 79 degrees 20 minutes 24 seconds West a distance of 93.43 feet to a  
13 point;

14 Then, along a non-tangent curve to the left having a delta of 74 degrees 25 minutes  
15 21 seconds, a radius of 84.00 feet, an arc length of 109.11 feet, a chord bearing of North  
16 10 degrees 30 minutes 42 seconds West and a chord distance of 101.60 feet to a point;

17 Then, along a curve to the right having a delta of 44 degrees 08 minutes 05  
18 seconds, a radius of 20.00 feet, an arc length of 15.41 feet, a chord bearing of North 25  
19 degrees 39 minutes 20 seconds West and a chord distance of 15.03 feet to a point;

20 Then, along a curve to the left having a delta of 11 degrees 12 minutes 34 seconds,  
21 a radius of 550.00 feet, an arc length of 107.60 feet, a chord bearing of North 09 degrees  
22 11 minutes 34 seconds West and a chord distance of 107.43 feet to a point;

23 Then, North 14 degrees 47 minutes 52 seconds West a distance of 401.79 feet to a  
24 point;

25 Then, along a curve to the right having a delta of 31 degrees 56 minutes 40  
26 seconds, a radius of 424.60 feet, an arc length of 236.73 feet, a chord bearing of North 01  
27 degrees 10 minutes 29 seconds East and a chord distance of 233.68 feet to a point;

28 Then, North 17 degrees 08 minutes 49 seconds East a distance of 51.60 feet to a  
29 point;

30 Then, along a curve to the right having a delta of 50 degrees 00 minutes 59  
31 seconds, a radius of 190.00 feet, an arc length of 165.86 feet, a chord bearing of North 42  
32 degrees 09 minutes 19 seconds East and a chord distance of 160.64 feet to a point;

33 Then, North 67 degrees 09 minutes 48 seconds East a distance of 626.21 feet to a  
34 point;

35 Then, along a curve to the left having a delta of 11 degrees 51 minutes 53 seconds,  
36 a radius of 397.07 feet, an arc length of 82.22 feet, a chord bearing of North 61 degrees 13  
37 minutes 52 seconds East and a chord distance of 82.08 feet to a point;

38 Then, North 55 degrees 17 minutes 55 seconds East a distance of 280.87 feet to a  
39 point;

Then, along a curve to the right having a delta of 36 degrees 16 minutes 37  
seconds, a radius of 20.00 feet, an arc length of 12.66 feet, a chord bearing of North 73  
degrees 26 minutes 13 seconds East and a chord distance of 12.45 feet to a point;

Then, South 88 degrees 25 minutes 28 seconds East a distance of 57.46 feet to a  
point;

1 **ORDINANCE NO. 3459**  
2 **ITEM NO. 08-02-2710**  
3 **PAGE 8**

4 Then, along a curve to the left having a delta of 160 degrees 05 minutes 58  
5 seconds, a radius of 109.00 feet, an arc length of 304.57 feet, a chord bearing of North 11  
6 degrees 31 minutes 33 seconds East and a chord distance of 214.72 feet to a point;

7 Then, along a curve to the right having a delta of 50 degrees 31 minutes 52  
8 seconds, a radius of 20.00 feet, an arc length of 17.64 feet, a chord bearing of North 43  
9 degrees 15 minutes 30 seconds West and a chord distance of 17.07 feet to a point;

10 Then, North 17 degrees 59 minutes 34 seconds West a distance of 102.86 feet to a  
11 point;

12 Then, along a curve to the right having a delta of 42 degrees 18 minutes 51  
13 seconds, a radius of 269.00 feet, an arc length of 198.66 feet, a chord bearing of North 03  
14 degrees 09 minutes 52 seconds East and a chord distance of 194.18 feet to a point;

15 Then, North 24 degrees 19 minutes 17 seconds East a distance of 437.09 feet to a  
16 point; to the POINT OF BEGINNING.

17 A certain tract or parcel of land being a portion of "TRACT 2C" of the Robert  
18 Levis Development L.L.C. Properties, containing 2.399 acres or 104,520  
19 square feet, located in sections 11 & 14, Township 9 South, Range 14 East,  
20 of the Greensburg Land District, St. Tammany Parish, Louisiana and being  
21 more particularly described as follows:

22 Commencing at the corner common to Sections 10, 11, 14 and 15, located along  
23 the southern right-of way line of Daney St.; said point being the "POINT OF  
24 COMMENCEMENT," and labeled P.O.C.

25 Then, continuing along said right of way line, North 89 degrees 11 minutes 00  
26 seconds East a distance of 1,160.00 feet to a point;

27 Then, departing said right of way, South 00 degrees 53 minutes 56 seconds East a  
28 distance of 426.06 feet to a point;

29 Then, North 89 degrees 14 minutes 33 seconds East a distance of 275.00 feet to a  
30 point;

31 Then, North 00 degrees 53 minutes 56 seconds West a distance of 424.53 feet to a  
32 point, located along the southerly right of way of Daney St.;

33 Then, continuing along said right of way, Then, along a non-tangent curve to the  
34 right having a delta of 16 degrees 17 minutes 43 seconds, a radius of 300.00 feet, an arc  
35 length of 85.32 feet, a chord bearing of South 76 degrees 21 minutes 57 seconds East and  
36 a chord distance of 85.03 feet to a point;

37 Then, South 68 degrees 13 minutes 05 seconds East a distance of 38.57 feet to a  
38 point;

39 Then, along a curve to the left having a delta of 30 degrees 56 minutes 24 seconds,  
a radius of 375.00 feet, an arc length of 202.50 feet, a chord bearing of South 83 degrees  
41 minutes 17 seconds East and a chord distance of 200.05 feet to a point;



1 **ORDINANCE NO. 3459**  
2 **ITEM NO. 08-02-2710**  
3 **PAGE 9**

4 Then, North 80 degrees 50 minutes 31 seconds East a distance of 167.84 feet to a  
5 point;

6 Then, along a curve to the right having a delta of 08 degrees 20 minutes 29  
7 seconds, a radius of 1,180.00 feet, an arc length of 171.79 feet, a chord bearing of North  
8 85 degrees 00 minutes 45 seconds East and a chord distance of 171.64 feet to a point;

9 Then, North 89 degrees 11 minutes 00 seconds East a distance of 457.12 feet to a  
10 point;

11 Then, departing said right of way, South 00 degrees 54 minutes 24 seconds East a  
12 distance of 305.86 feet to a point;

13 Then, North 88 degrees 52 minutes 00 seconds East a distance of 96.48 feet to a  
14 point;

15 Then, North 89 degrees 12 minutes 00 seconds East a distance of 659.91 feet to a  
16 point; said being the "POINT OF BEGINNING" and labeled "P.O.B.3,"

17 Then, North 00 degrees 49 minutes 38 seconds West a distance of 330.00 feet to a  
18 point;

19 Then, South 89 degrees 48 minutes 29 seconds East a distance of 87.29 feet to a  
20 point;

21 Then, North 30 degrees 15 minutes 15 seconds East a distance of 121.88 feet to a  
22 point;

23 Then, North 12 degrees 42 minutes 53 seconds East a distance of 121.63 feet to a  
24 point;

25 Then, North 02 degrees 51 minutes 46 seconds West a distance of 32.86 feet to a  
26 point;

27 Then, North 13 degrees 49 minutes 48 seconds West a distance of 90.97 feet to a  
28 point;

29 Then, North 89 degrees 09 minutes 03 seconds East a distance of 15.43 feet to a  
30 point;

31 Then, North 12 degrees 18 minutes 35 seconds West a distance of 2.41 feet to a  
32 point;

33 Then, North 03 degrees 53 minutes 55 seconds West a distance of 173.82 feet to a  
34 point;

35 Then, North 14 degrees 24 minutes 36 seconds East a distance of 160.77 feet to a  
36 point, located along the southerly right of way line of US Highway No. 190 (also known as  
37 Fremaux Road/ Short Cut Road);

38 Then, continuing along said right of way, South 65 degrees 44 minutes 07 seconds  
39 East a distance of 187.34 feet to a point;

Then, departing said right of way, South 24 degrees 19 minutes 17 seconds West a  
distance of 436.83 feet to a point;

1 **ORDINANCE NO. 3459**  
2 **ITEM NO. 08-02-2710**  
3 **PAGE 10**

4 Then, along a curve to the left having a delta of 38 degrees 05 minutes 10 seconds,  
5 a radius of 381.00 feet, an arc length of 253.26 feet, a chord bearing of South 05 degrees  
6 16 minutes 43 seconds West and a chord distance of 248.63 feet to a point;

7 Then, along a curve to the right having a delta of 69 degrees 03 minutes 48  
8 seconds, a radius of 269.00 feet, an arc length of 324.25 feet, a chord bearing of South 20  
9 degrees 46 minutes 01 seconds West and a chord distance of 304.97 feet to a point;

10 Then, South 55 degrees 17 minutes 55 seconds West a distance of 10.79 feet to a  
11 point;

12 Then, South 50 degrees 32 minutes 06 seconds West a distance of 26.39 feet to a  
13 point;

14 Then, North 41 degrees 03 minutes 04 seconds West a distance of 32.13 feet to a  
15 point; to the POINT OF BEGINNING.

16 2. Consent. The undersigned are the owners of 100% of the immovable  
17 property in the proposed district, and hereby consents to the establishment of the district  
18 and the inclusion of the property described in Paragraph 1 above in the proposed district.

19 3. Members of Board of Supervisors. The following five (5) persons are  
20 designated as the initial members of the board of supervisors of the district, and shall  
21 serve in that office until replaced by elected members as provided in R.S.  
22 33:9039.15(B)(1):  
23  
24  
25  
26  
27  
28  
29  
30  
31  
32  
33  
34  
35  
36  
37  
38  
39

<u>Name</u>	<u>Mailing Address</u>
Robert Levis*	Robert Levis Levis Chevrolet/Cadillac P. O. Box 1529 Slidell, LA 70459
Stan Middleton, III	Commercial Holding Corporation 14 Rue Royale Metairie, Louisiana 70002
Seth Levine	201 St. Charles Ave., Suite 3600 New Orleans, Louisiana 70170
Rusty Palmer	Corporate Realty 201 St. Charles Ave., Suite 4411 New Orleans, Louisiana 70170
Michael J. Siegel	459 Audubon St. New Orleans, Louisiana 70118

21 \*As required by R.S. 33:9039.15(A), Mr. Levis is a resident of the area immediately  
22 adjacent to the district.  
23

24 4. Name of District. The district shall be called the "Fremaux Community  
25 Development District, State of Louisiana."  
26

27 5. Map of District. A map of the district, showing existing infrastructure, if any,  
28 is attached as Exhibit B attached to this petition:

29 6. Proposed Services and Estimated Construction Costs. Based upon available  
30 data, the district proposes to provide the following services, and the proposed timetable for  
31 construction of same is as follows:

- 32 Earthwork and grading (not including building pad sites), including mass excavation;
- 33 Utilities (including utilities to buildings), including storm and sanitary sewerage,  
34 electric, water, telephone and cable;
- 35 Paving, parking lots and roadways;
- 36 Hardscape and landscape;
- 37 Design and Engineering;
- 38 Development Fees (not including fees on buildings); and
- 39 Bond Underwriting and Legal Fees.

4 The proposed timetable is attached to this Petition.

5  
6 WHEREFORE, the petitioner respectfully requests that the Slidell City Council  
7 advertise for and hold the public hearing called for in La. R.S. 33:9039.14(B) within forty-  
8 five (45) days after the filing of this petition, unless an extension of time is requested by the  
9 undersigned and granted by the said City Council. Notice of the hearing shall be published  
10 in the official journal of the City of Slidell once a week for the four (4) successive weeks  
11 immediately prior to the hearing, as provided by La. R.S. 33:9039.14(B).

12 **PETITIONERS:**

13 **ROBERT LEVIS DEVELOPMENT**  
14 **COMPANY, LLC**

15  
16 By: \_\_\_\_\_

17 Title:

18  
19 **LEVIS PARTNERS, LLC**

20  
21 By: \_\_\_\_\_

22 Title:

23  
24 Dated: \_\_\_\_\_, 2008

25  
26  
27  
28  
29  
30 **[TIMETABLE OF EVENTS TO COME]**  
31  
32  
33  
34  
35  
36  
37  
38  
39

4 EXHIBIT B

5 A certain tract or parcel of land designated as "TRACT 1A" being a portion of  
6 "TRACT 1" of the Robert Levis Development L.L.C. Properties, containing  
7 89.159 acres or 3,883,770 square feet, located in sections 11 & 14,  
8 Township 9 South, Range 14 East, of the Greensburg Land District, St.  
9 Tammany Parish, Louisiana and being more particularly described as  
10 follows:

11 Commencing at the corner common to Sections 10, 11, 14 and 15, located along  
12 the southern right-of way line of Daney St.; said point being the "POINT OF  
13 COMMENCEMENT," and labeled P.O.C.

14 Then, continuing along said right of way line, North 89 degrees 11 minutes 00  
15 seconds East a distance of 332.00 feet to a point;

16 Then, North 89 degrees 11 minutes 00 seconds East a distance of 828.00 feet to a  
17 point;

18 Then, departing said right of way line, South 00 degrees 53 minutes 56 seconds  
19 East a distance of 426.06 feet to a point;

20 Then, North 89 degrees 14 minutes 33 seconds East a distance of 275.00 feet to a  
21 point;

22 Then, North 00 degrees 53 minutes 56 seconds West a distance of 424.53 feet to a  
23 point, located along the southerly right of way line of Daney St.;

24 Then, continuing along said right of way line, along a non-tangent curve to the right  
25 having a delta of 16 degrees 17 minutes 43 seconds, a radius of 300.00 feet, an arc length  
26 of 85.32 feet, a chord bearing of South 76 degrees 21 minutes 57 seconds East and a  
27 chord distance of 85.03 feet to a point;

28 Then, South 68 degrees 13 minutes 05 seconds East a distance of 38.57 feet to a  
29 point;

30 Then, along a curve to the left having a delta of 30 degrees 56 minutes 24 seconds,  
31 a radius of 375.00 feet, an arc length of 202.50 feet, a chord bearing of South 83 degrees  
32 41 minutes 17 seconds East and a chord distance of 200.05 feet to a point;

33 Then, North 80 degrees 50 minutes 31 seconds East a distance of 167.84 feet to a  
34 point;

35 Then, along a curve to the right having a delta of 08 degrees 20 minutes 29  
36 seconds, a radius of 1,180.00 feet, an arc length of 171.79 feet, a chord bearing of North  
37 85 degrees 00 minutes 45 seconds East and a chord distance of 171.64 feet to a point;

38 Then, North 89 degrees 11 minutes 00 seconds East a distance of 457.12 feet to a  
39 point;

Then, departing said right of way line, South 00 degrees 54 minutes 24 seconds  
East a distance of 305.86 feet to a point;

Then, North 88 degrees 52 minutes 00 seconds East a distance of 96.48 feet to a  
point;

1 **ORDINANCE NO. 3459**  
2 **ITEM NO. 08-02-2710**  
3 **PAGE 14**

4 Then, North 89 degrees 12 minutes 00 seconds East a distance of 659.91 feet to a  
5 point;  
6 Then, North 00 degrees 49 minutes 38 seconds West a distance of 330.00 feet to a  
7 point;  
8 Then, South 89 degrees 48 minutes 29 seconds East a distance of 87.29 feet to a  
9 point;  
10 Then, North 30 degrees 15 minutes 15 seconds East a distance of 121.88 feet to a  
11 point;  
12 Then, North 12 degrees 42 minutes 53 seconds East a distance of 121.63 feet to a  
13 point;  
14 Then, North 02 degrees 51 minutes 46 seconds West a distance of 32.86 feet to a  
15 point;  
16 Then, North 13 degrees 49 minutes 48 seconds West a distance of 90.97 feet to a  
17 point;  
18 Then, North 89 degrees 09 minutes 03 seconds East a distance of 15.43 feet to a  
19 point;  
20 Then, North 12 degrees 18 minutes 35 seconds West a distance of 2.41 feet to a  
21 point;  
22 Then, North 03 degrees 53 minutes 55 seconds West a distance of 173.82 feet to a  
23 point;  
24 Then, North 14 degrees 24 minutes 36 seconds East a distance of 160.77 feet to a  
25 point, located along the southerly right of way line of US Highway No. 190 (also known as  
26 Fremaux Road/ Short Cut Road);  
27 Then, continuing along said right of way, South 65 degrees 44 minutes 07 seconds  
28 East a distance of 205.13 feet to a point;  
29 Then, South 65 degrees 49 minutes 03 seconds East a distance of 94.22 feet to a  
30 point; said being the "POINT OF BEGINNING" and labeled "P.O.B.4,"  
31 Then, continuing along said right of way, South 65 degrees 49 minutes 03 seconds  
32 East a distance of 188.76 feet to a point;  
33 Then, departing said right of way, South 22 degrees 11 minutes 41 seconds East a  
34 distance of 22.23 feet to a point;  
35 Then, South 20 degrees 57 minutes 02 seconds West a distance of 128.81 feet to a  
36 point;  
37 Then, South 60 degrees 44 minutes 07 seconds East a distance of 286.86 feet to a  
38 point;  
39 Then, South 60 degrees 43 minutes 57 seconds East a distance of 278.21 feet to a  
point;  
Then, South 30 degrees 57 minutes 31 seconds East a distance of 283.50 feet to a  
point;  
Then, South 06 degrees 28 minutes 36 seconds West a distance of 74.73 feet to a  
point;

1 **ORDINANCE NO. 3459**  
2 **ITEM NO. 08-02-2710**  
3 **PAGE 15**

4 Then, South 73 degrees 10 minutes 08 seconds East a distance of 22.71 feet to a  
5 point;  
6 Then, North 84 degrees 21 minutes 35 seconds East a distance of 108.06 feet to a  
7 point;  
8 Then, South 05 degrees 06 minutes 41 seconds East a distance of 274.30 feet to a  
9 point;  
10 Then, South 40 degrees 18 minutes 15 seconds West a distance of 360.63 feet to a  
11 point;  
12 Then, South 17 degrees 10 minutes 07 seconds West a distance of 400.00 feet to a  
13 point, located on the westerly right of way line of Interstate Highway no. 10;  
14 Then, continuing along said right of way, South 17 degrees 10 minutes 07 seconds  
15 West a distance of 1008.64 feet to a point;  
16 Then, departing said right of way , North 73 degrees 56 minutes 09 seconds West a  
17 distance of 204.68 feet to a point;  
18 Then, South 54 degrees 24 minutes 20 seconds West a distance of 128.51 feet to a  
19 point;  
20 Then, North 40 degrees 58 minutes 45 seconds West a distance of 233.70 feet to a  
21 point;  
22 Then, North 85 degrees 14 minutes 26 seconds West a distance of 75.34 feet to a  
23 point;  
24 Then, North 00 degrees 49 minutes 44 seconds West a distance of 11.91 feet to a  
25 point;  
26 Then, South 89 degrees 02 minutes 58 seconds West a distance of 100.00 feet to a  
27 point;  
28 Then, South 00 degrees 49 minutes 44 seconds East a distance of 1.91 feet to a  
29 point;  
30 Then, North 85 degrees 14 minutes 26 seconds West a distance of 456.60 feet to a  
31 point;  
32 Then, North 04 degrees 45 minutes 34 seconds East a distance of 571.77 feet to a  
33 point;  
34 Then, North 85 degrees 14 minutes 06 seconds West a distance of 328.54 feet to a  
35 point;  
36 Then, South 84 degrees 06 minutes 07 seconds West a distance of 42.24 feet to a  
37 point;  
38 Then, South 79 degrees 20 minutes 24 seconds West a distance of 93.43 feet to a  
39 point;  
40 Then, along a non-tangent curve to the left having a delta of 74 degrees 25 minutes  
41 21 seconds, a radius of 84.00 feet, an arc length of 109.11 feet, a chord bearing of North  
42 10 degrees 30 minutes 42 seconds West and a chord distance of 101.60 feet to a point;

1 **ORDINANCE NO. 3459**  
2 **ITEM NO. 08-02-2710**  
3 **PAGE 16**

4 Then, along a curve to the right having a delta of 44 degrees 08 minutes 05  
5 seconds, a radius of 20.00 feet, an arc length of 15.41 feet, a chord bearing of North 25  
6 degrees 39 minutes 20 seconds West and a chord distance of 15.03 feet to a point;

7 Then, along a curve to the left having a delta of 11 degrees 12 minutes 34 seconds,  
8 a radius of 550.00 feet, an arc length of 107.60 feet, a chord bearing of North 09 degrees  
9 11 minutes 34 seconds West and a chord distance of 107.43 feet to a point;

10 Then, North 14 degrees 47 minutes 52 seconds West a distance of 401.79 feet to a  
11 point;

12 Then, along a curve to the right having a delta of 31 degrees 56 minutes 40  
13 seconds, a radius of 424.60 feet, an arc length of 236.73 feet, a chord bearing of North 01  
14 degrees 10 minutes 29 seconds East and a chord distance of 233.68 feet to a point;

15 Then, North 17 degrees 08 minutes 49 seconds East a distance of 51.60 feet to a  
16 point;

17 Then, along a curve to the right having a delta of 50 degrees 00 minutes 59  
18 seconds, a radius of 190.00 feet, an arc length of 165.86 feet, a chord bearing of North 42  
19 degrees 09 minutes 19 seconds East and a chord distance of 160.64 feet to a point;

20 Then, North 67 degrees 09 minutes 48 seconds East a distance of 626.21 feet to a  
21 point;

22 Then, along a curve to the left having a delta of 11 degrees 51 minutes 53 seconds,  
23 a radius of 397.07 feet, an arc length of 82.22 feet, a chord bearing of North 61 degrees 13  
24 minutes 52 seconds East and a chord distance of 82.08 feet to a point;

25 Then, North 55 degrees 17 minutes 55 seconds East a distance of 280.87 feet to a  
26 point;

27 Then, along a curve to the right having a delta of 36 degrees 16 minutes 37  
28 seconds, a radius of 20.00 feet, an arc length of 12.66 feet, a chord bearing of North 73  
29 degrees 26 minutes 13 seconds East and a chord distance of 12.45 feet to a point;

30 Then, South 88 degrees 25 minutes 28 seconds East a distance of 57.46 feet to a  
31 point;

32 Then, along a curve to the left having a delta of 160 degrees 05 minutes 58  
33 seconds, a radius of 109.00 feet, an arc length of 304.57 feet, a chord bearing of North 11  
34 degrees 31 minutes 33 seconds East and a chord distance of 214.72 feet to a point;

35 Then, along a curve to the right having a delta of 50 degrees 31 minutes 52  
36 seconds, a radius of 20.00 feet, an arc length of 17.64 feet, a chord bearing of North 43  
37 degrees 15 minutes 30 seconds West and a chord distance of 17.07 feet to a point;

38 Then, North 17 degrees 59 minutes 34 seconds West a distance of 102.86 feet to a  
39 point;

Then, along a curve to the right having a delta of 42 degrees 18 minutes 51  
seconds, a radius of 269.00 feet, an arc length of 198.66 feet, a chord bearing of North 03  
degrees 09 minutes 52 seconds East and a chord distance of 194.18 feet to a point;

Then, North 24 degrees 19 minutes 17 seconds East a distance of 437.09 feet to a  
point; to the POINT OF BEGINNING.



1 **ORDINANCE NO. 3459**  
2 **ITEM NO. 08-02-2710**  
3 **PAGE 17**

4 A certain tract or parcel of land being a portion of "TRACT 2C" of the  
5 Robert Levis Development L.L.C. Properties, containing 2.399 acres or  
6 104,520 square feet, located in sections 11 & 14, Township 9 South, Range  
7 14 East, of the Greensburg Land District, St. Tammany Parish, Louisiana  
8 and being more particularly described as follows:

9 Commencing at the corner common to Sections 10, 11, 14 and 15, located along  
10 the southern right-of way line of Daney St.; said point being the "POINT OF  
11 COMMENCEMENT," and labeled P.O.C.

12 Then, continuing along said right of way line, North 89 degrees 11 minutes 00  
13 seconds East a distance of 1,160.00 feet to a point;

14 Then, departing said right of way, South 00 degrees 53 minutes 56 seconds East a  
15 distance of 426.06 feet to a point;

16 Then, North 89 degrees 14 minutes 33 seconds East a distance of 275.00 feet to a  
17 point;

18 Then, North 00 degrees 53 minutes 56 seconds West a distance of 424.53 feet to a  
19 point, located along the southerly right of way of Daney St.;

20 Then, continuing along said right of way, Then, along a non-tangent curve to the  
21 right having a delta of 16 degrees 17 minutes 43 seconds, a radius of 300.00 feet, an arc  
22 length of 85.32 feet, a chord bearing of South 76 degrees 21 minutes 57 seconds East and  
23 a chord distance of 85.03 feet to a point;

24 Then, South 68 degrees 13 minutes 05 seconds East a distance of 38.57 feet to a  
25 point;

26 Then, along a curve to the left having a delta of 30 degrees 56 minutes 24 seconds,  
27 a radius of 375.00 feet, an arc length of 202.50 feet, a chord bearing of South 83 degrees  
28 41 minutes 17 seconds East and a chord distance of 200.05 feet to a point;

29 Then, North 80 degrees 50 minutes 31 seconds East a distance of 167.84 feet to a  
30 point;

31 Then, along a curve to the right having a delta of 08 degrees 20 minutes 29  
32 seconds, a radius of 1,180.00 feet, an arc length of 171.79 feet, a chord bearing of North  
33 85 degrees 00 minutes 45 seconds East and a chord distance of 171.64 feet to a point;

34 Then, North 89 degrees 11 minutes 00 seconds East a distance of 457.12 feet to a  
35 point;

36 Then, departing said right of way, South 00 degrees 54 minutes 24 seconds East a  
37 distance of 305.86 feet to a point;

38 Then, North 88 degrees 52 minutes 00 seconds East a distance of 96.48 feet to a  
39 point;

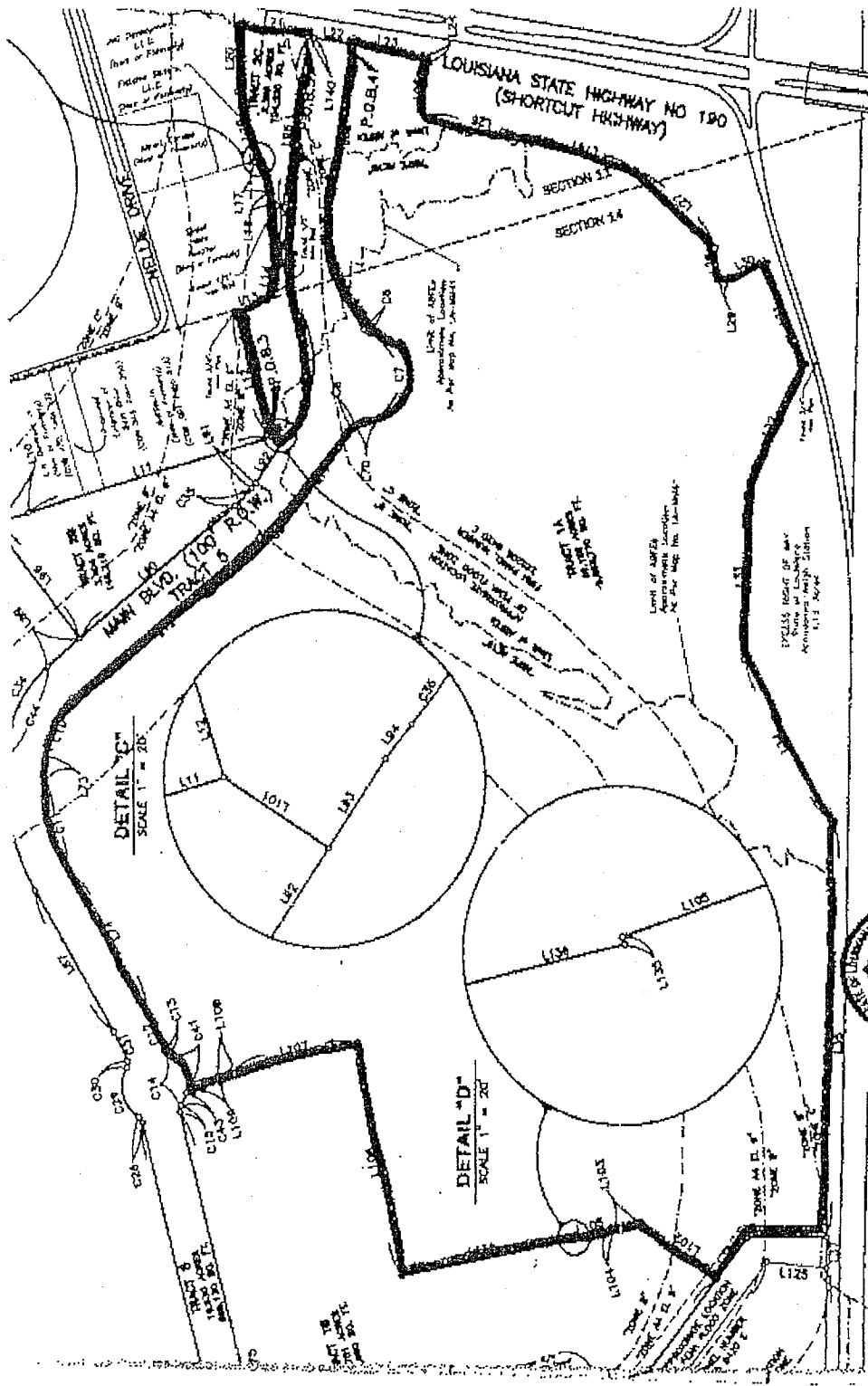
Then, North 89 degrees 12 minutes 00 seconds East a distance of 659.91 feet to a  
point; said being the "POINT OF BEGINNING" and labeled "P.O.B.3,"

Then, North 00 degrees 49 minutes 38 seconds West a distance of 330.00 feet to a  
point;

1 **ORDINANCE NO. 3459**  
2 **ITEM NO. 08-02-2710**  
3 **PAGE 18**

4 Then, South 89 degrees 48 minutes 29 seconds East a distance of 87.29 feet to a  
5 point;  
6 Then, North 30 degrees 15 minutes 15 seconds East a distance of 121.88 feet to a  
7 point;  
8 Then, North 12 degrees 42 minutes 53 seconds East a distance of 121.63 feet to a  
9 point;  
10 Then, North 02 degrees 51 minutes 46 seconds West a distance of 32.86 feet to a  
11 point;  
12 Then, North 13 degrees 49 minutes 48 seconds West a distance of 90.97 feet to a  
13 point;  
14 Then, North 89 degrees 09 minutes 03 seconds East a distance of 15.43 feet to a  
15 point;  
16 Then, North 12 degrees 18 minutes 35 seconds West a distance of 2.41 feet to a  
17 point;  
18 Then, North 03 degrees 53 minutes 55 seconds West a distance of 173.82 feet to a  
19 point;  
20 Then, North 14 degrees 24 minutes 36 seconds East a distance of 160.77 feet to a  
21 point, located along the southerly right of way line of US Highway No. 190 (also known as  
22 Fremaux Road/ Short Cut Road);  
23 Then, continuing along said right of way, South 65 degrees 44 minutes 07 seconds  
24 East a distance of 187.34 feet to a point;  
25 Then, departing said right of way, South 24 degrees 19 minutes 17 seconds West a  
26 distance of 436.83 feet to a point;  
27 Then, along a curve to the left having a delta of 38 degrees 05 minutes 10 seconds,  
28 a radius of 381.00 feet, an arc length of 253.26 feet, a chord bearing of South 05 degrees  
29 16 minutes 43 seconds West and a chord distance of 248.63 feet to a point;  
30 Then, along a curve to the right having a delta of 69 degrees 03 minutes 48  
31 seconds, a radius of 269.00 feet, an arc length of 324.25 feet, a chord bearing of South 20  
32 degrees 46 minutes 01 seconds West and a chord distance of 304.97 feet to a point;  
33 Then, South 55 degrees 17 minutes 55 seconds West a distance of 10.79 feet to a  
34 point;  
35 Then, South 50 degrees 32 minutes 06 seconds West a distance of 26.39 feet to a  
36 point;  
37 Then, North 41 degrees 03 minutes 04 seconds West a distance of 32.13 feet to a  
38 point; to the POINT OF BEGINNING.  
39

1  
2  
3  
4  
5  
6  
7  
8  
9  
10  
11  
12  
13  
14  
15  
16  
17  
18  
19  
20  
21  
22  
23  
24  
25  
26  
27  
28  
29  
30  
31  
32  
33  
34  
35  
36  
37  
38  
39



# ACADIA

LAND SURVEYING, L.L.C.

Phone (707) 444-0088  
 Fax (707) 444-0085  
 234 Cass Avenue, Suite 100  
 Ukiah, California 95524  
 Email: ACADIA@COMCAST.NET

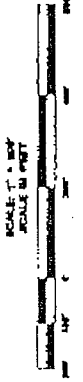
SHEET 1 OF 2



CERTIFICATION:  
 I, the undersigned, being duly sworn, depose and say that the foregoing is a true and correct copy of the original and that the same was prepared by me or under my direct supervision and that I am a duly licensed and qualified land surveyor in the State of California.

*Thomas J. Blanchard*  
 Thomas J. Blanchard, License No. 4417  
 State of California  
 Land Surveyor

LINE	DESCRIPTION	BEARING	DISTANCE
1			
2			
3			
4			
5			
6			
7			
8			
9			
10			
11			
12			
13			
14			
15			
16			
17			
18			
19			
20			
21			
22			
23			
24			
25			
26			
27			
28			
29			
30			
31			
32			
33			
34			
35			
36			
37			
38			
39			



1 **ORDINANCE NO. 3459**  
2 **ITEM NO. 08-02-2710**  
3 **PAGE 20**

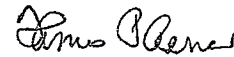
4 STATE OF LOUISIANA

5  
6 PARISH OF ST. TAMMANY

7 I, the undersigned Council Administrator of the Slidell City Council do hereby certify  
8  
9 that the foregoing nineteen (19) pages constitute a true and correct copy of the  
10  
11 proceedings taken by said Council on March 25, 2008, creating the "Fremaux Community  
12  
13 Development District, State of Louisiana" as authorized by Chapter 27-B of Title 33 of the  
14  
15 Louisiana Revised Statutes of 1950, as amended; and providing for other matters in  
16  
17 connection with the foregoing.

18 IN FAITH WHEREOF, witness my official signature and the impress of the official  
19  
20 seal of said City on this, the 25th day of March, 2008.

21  
22 (SEAL)



---

Thomas P. Reeves  
Council Administrator