

1 Introduced January 8, 2008, by Councilman
2 Canada, seconded by Councilman Hursey, (by
3 request of Administration)

4 **Item No. 08-01-2704**

5 **ORDINANCE NO. 3455**

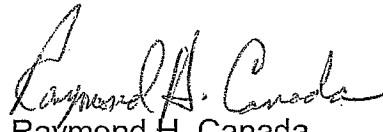
6 An ordinance amending Ordinance No. 3424, adopted September 25, 2007,
7 to change the description of a parcel of land.
8


9 WHEREAS, the City Administration has requested that a change be made to
10 the property description of the 40-foot un-constructed right-of-way of Opal Street.
11

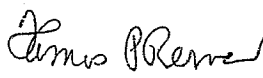
12 NOW THEREFORE BE IT ORDAINED by the Slidell City Council that
13 Ordinance No. 3424 be amended by changing the property description of the 40-foot un-
14 constructed right-of-way of Opal Street to the following:
15

16 "The 40-foot un-constructed right-of-way of Opal Street commencing at the
17 southeast lot corner of Lot 22, Sq. 26, Pearl Acres Subdivision, going North
18 approximately 852.27 feet. This right-of-way lies adjacent to Sq. 26, front
19 Lots 15, 16, 17, 18, 19, 20, 21 and 22, Pearl Acres Subdivision."
20

21 **ADOPTED** this 26th day of February, 2008.
22

23
24
25 
26 Raymond H. Canada
27 President of the Council
28 Councilman, District E
29

30 
31 Ben O. Morris
32 Mayor
33

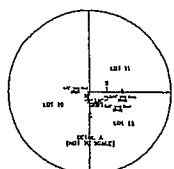
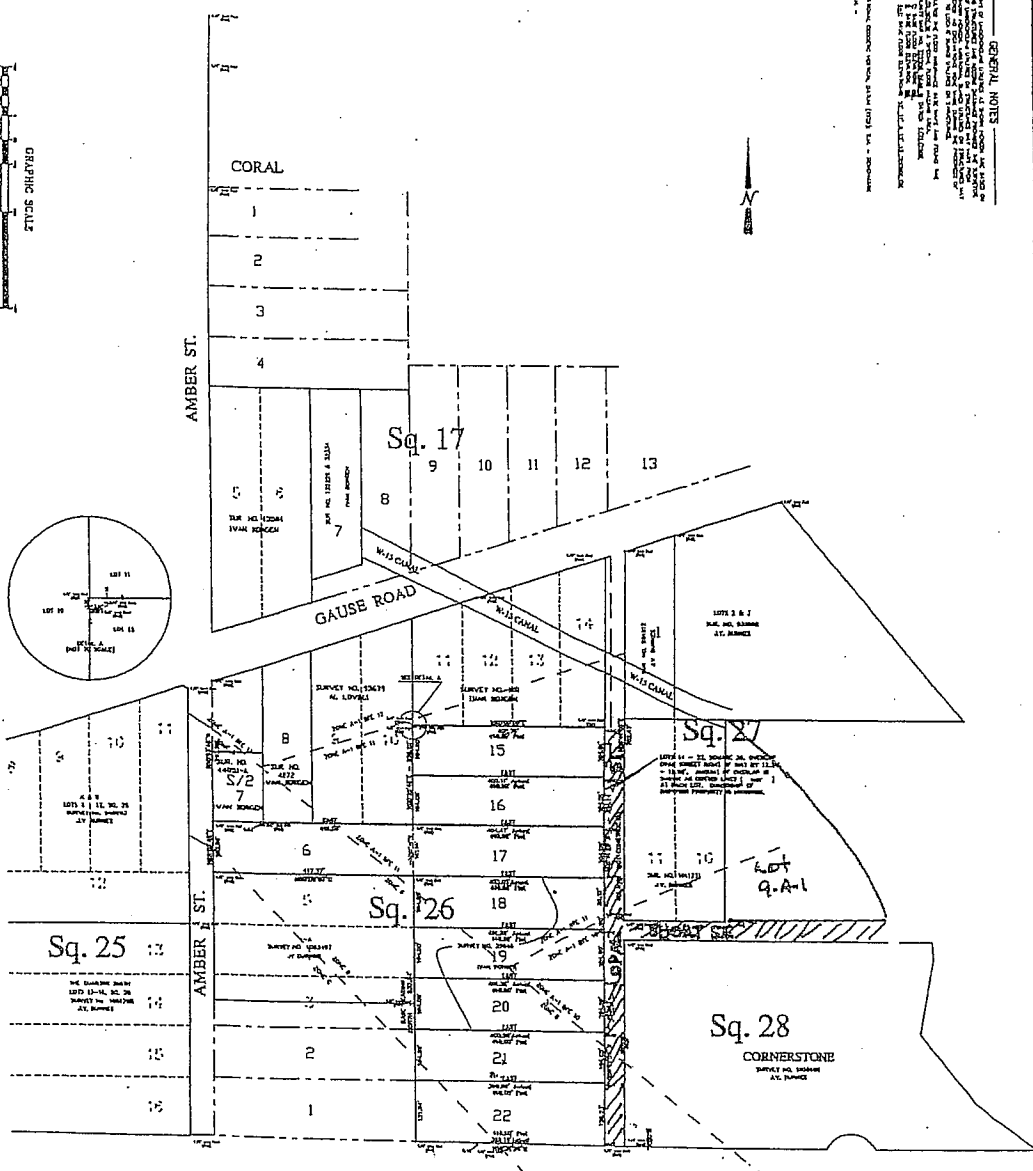
34 
35 Thomas P. Reeves
36 Council Administrator
37

38
39
DELIVERED 12:45 p.m.
2/27/08 to the Mayor
RECEIVED 10:30 a.m.
3/5/08 from the Mayor

GRAPHIC SCALE

SEALON TIERBER

THIS PLAN IS SUBJECT TO THE PROVISIONS OF THE SUBDIVISION ACT OF 1924, AS AMENDED, AND TO THE PROVISIONS OF THE SUBDIVISION ACT OF 1954, AS AMENDED, AND TO THE PROVISIONS OF THE SUBDIVISION ACT OF 1968, AS AMENDED, AND TO THE PROVISIONS OF THE SUBDIVISION ACT OF 1972, AS AMENDED, AND TO THE PROVISIONS OF THE SUBDIVISION ACT OF 1976, AS AMENDED, AND TO THE PROVISIONS OF THE SUBDIVISION ACT OF 1980, AS AMENDED, AND TO THE PROVISIONS OF THE SUBDIVISION ACT OF 1984, AS AMENDED, AND TO THE PROVISIONS OF THE SUBDIVISION ACT OF 1988, AS AMENDED, AND TO THE PROVISIONS OF THE SUBDIVISION ACT OF 1992, AS AMENDED, AND TO THE PROVISIONS OF THE SUBDIVISION ACT OF 1996, AS AMENDED, AND TO THE PROVISIONS OF THE SUBDIVISION ACT OF 2000, AS AMENDED, AND TO THE PROVISIONS OF THE SUBDIVISION ACT OF 2004, AS AMENDED, AND TO THE PROVISIONS OF THE SUBDIVISION ACT OF 2008, AS AMENDED, AND TO THE PROVISIONS OF THE SUBDIVISION ACT OF 2012, AS AMENDED, AND TO THE PROVISIONS OF THE SUBDIVISION ACT OF 2016, AS AMENDED, AND TO THE PROVISIONS OF THE SUBDIVISION ACT OF 2020, AS AMENDED, AND TO THE PROVISIONS OF THE SUBDIVISION ACT OF 2024, AS AMENDED.



CERTIFICATION

I, J.V. BURKES, REGISTERED PROFESSIONAL ENGINEER AND SURVEYOR, STATE OF LOUISIANA, NO. 4765, DO HEREBY CERTIFY THAT THE ABOVE IS A TRUE AND CORRECT COPY OF THE ORIGINAL RECORD AS FILED IN MY OFFICE ON THIS DATE.

LOTS 8 & 15 - 22, SQUARE 26,
PEARL ACRES SUBDIVISION,
LOCATED NEAR THE CITY OF SLUGGILL
IN SECTION 8, T-9-S, R-15-E,
ST. TAMMANY PARISH, LOUISIANA

EDWARD SHEET

J.V. Burkes & Associates, Inc.
REGISTERED PROFESSIONAL ENGINEERS & SURVEYORS

5

STATE OF LOUISIANA

SEAN M. BURKES
REG. NO. 4765
REGISTERED